

PPT-236ES

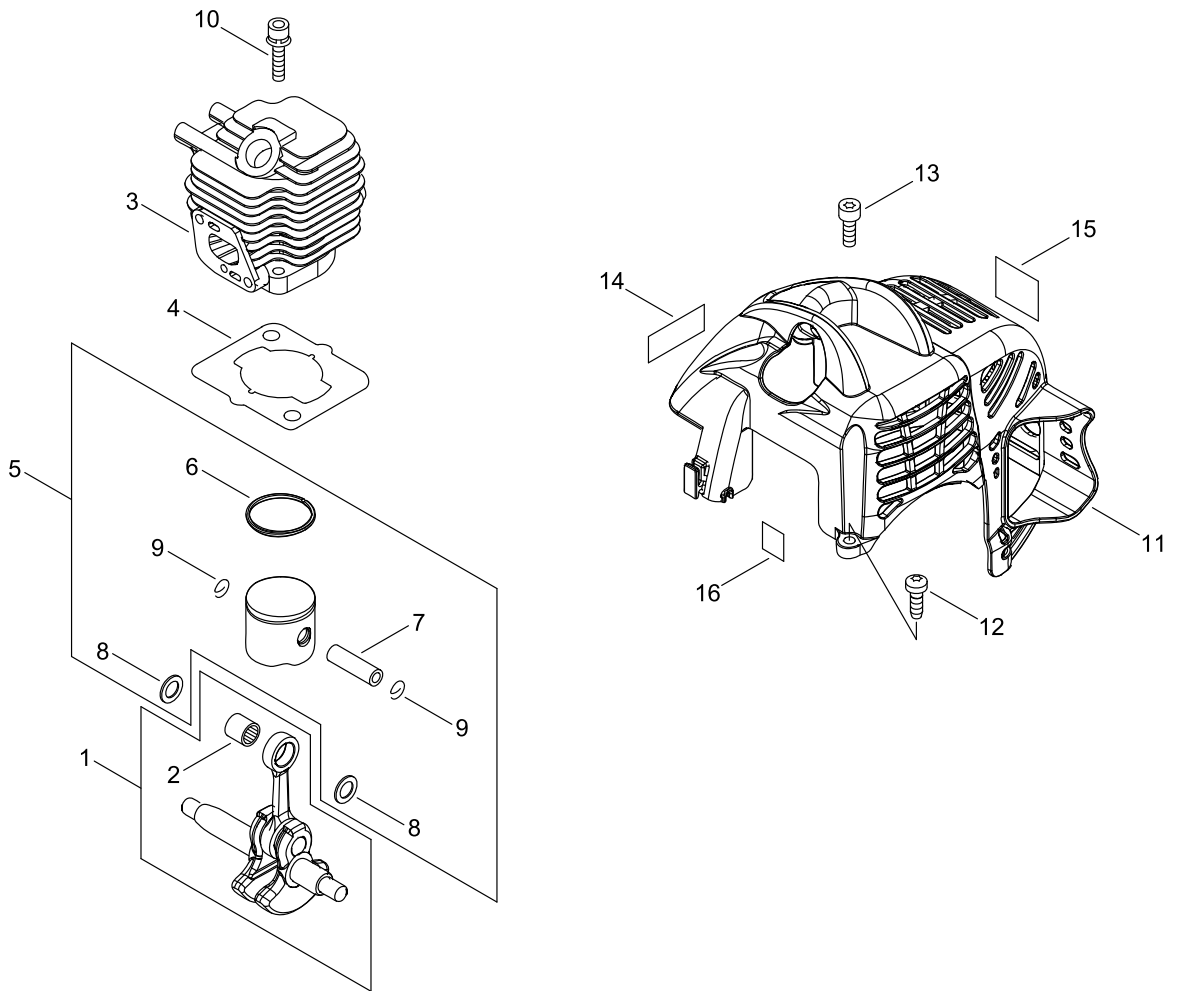
Serial number: 38000001-38999999

Last update date: 01/28/2020

TABLE OF CONTENTS

CYLINDER, PISTON, CRANKSHAFT.....	1
CRANKCASE	3
MAGNETO.....	5
CLUTCH.....	7
AIR CLEANER, CARBURETOR.....	9
CARBURETOR.....	11
FUEL TANK.....	13
MUFFLER	15
RECOIL STARTER, PULLY	17
GEAR CASE.....	19
MAIN PIPE	23
THROTTLE	25
ACCESSORIES	27
OILER.....	29

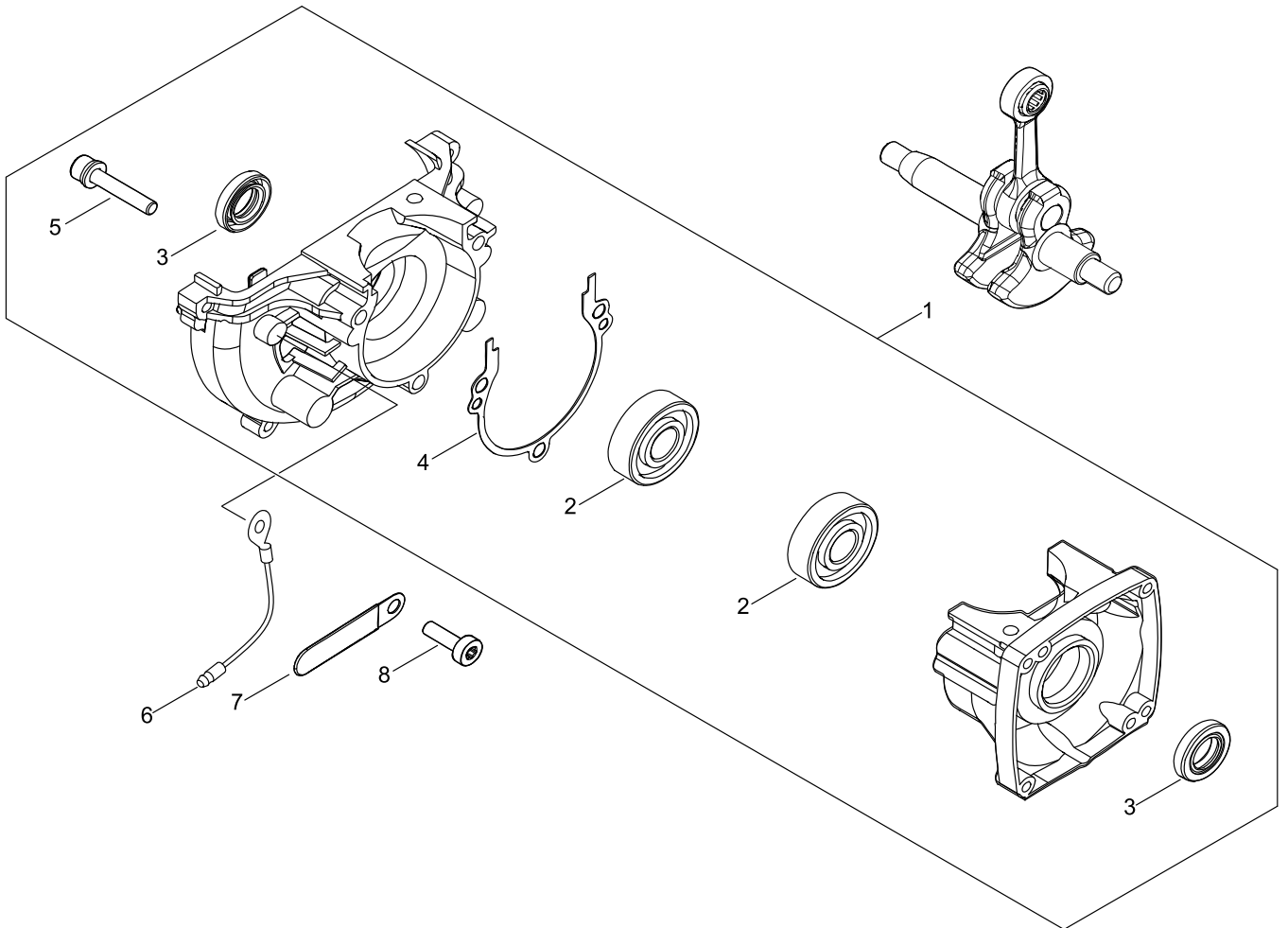
CYLINDER, PISTON, CRANKSHAFT



CYLINDER, PISTON, CRANKSHAFT

Key No.	LV (+)	Part No	Description	Qty	Standard
1		A011-001410	CRANKSHAFT,ASY	1	
2	+	V553-000060	BEARING,NEEDLE 8	1	HK0810FMV4
3		A130-002100	CYLINDER	1	
4		101010-44332	GASKET, CYL. BASE	1	
5		P021-007712	PISTON KIT	1	
6	+	A101-000090	RING,PISTON	1	
7	+	100013-11520	PIN, PISTON	1	
8	+	100014-11520	SPACER, PISTON PIN	2	
9	+	100015-04630	CIRCLIP, PISTON PIN	2	
10		900162-05022	BOLT, H.S. 5*22	2	5*22 W,SW
11		A160-001090	COVER,CYLINDER	1	
12		V805-000000	BOLT, TORX 5	1	TT-5*16 DG 10.9
13		V805-000150	BOLT, TORX 5	1	TB-5*16 10.9
14		X547-002680	LABEL,ECHO	1	ECHO+ PPT-236ES
15		X505-008220	LABEL,CAUTION	1	HOT CAUTION
16		X524-001901	LABEL	1	

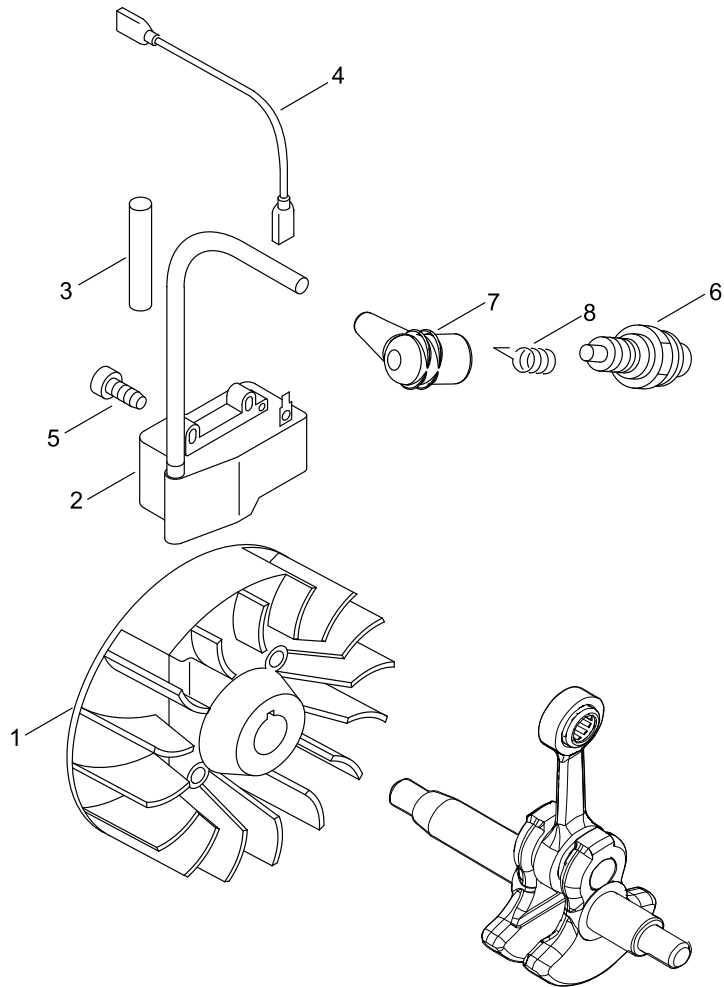
CRANKCASE



CRANKCASE

Key No.	LV (+)	Part No	Description	Qty	Standard
1		P100-001870	CRANKCASE SET	1	
2	+	94035-36201	BEARING BALL	2	6201X3JR2C3
3	+	100212-42031	OILSEAL	2	ISCD 12*22*4.5
4	+	100242-42030	GASKET, CRANKCASE	1	
5	+	900162-05028	BOLT, H.S. 5*28	3	5*28 W,SW
6		162014-27230	LEAD, GROUND	1	
7		159116-21231	CLAMP	1	
8		V805-000130	BOLT, TORX 5	1	TB-5*10 10.9

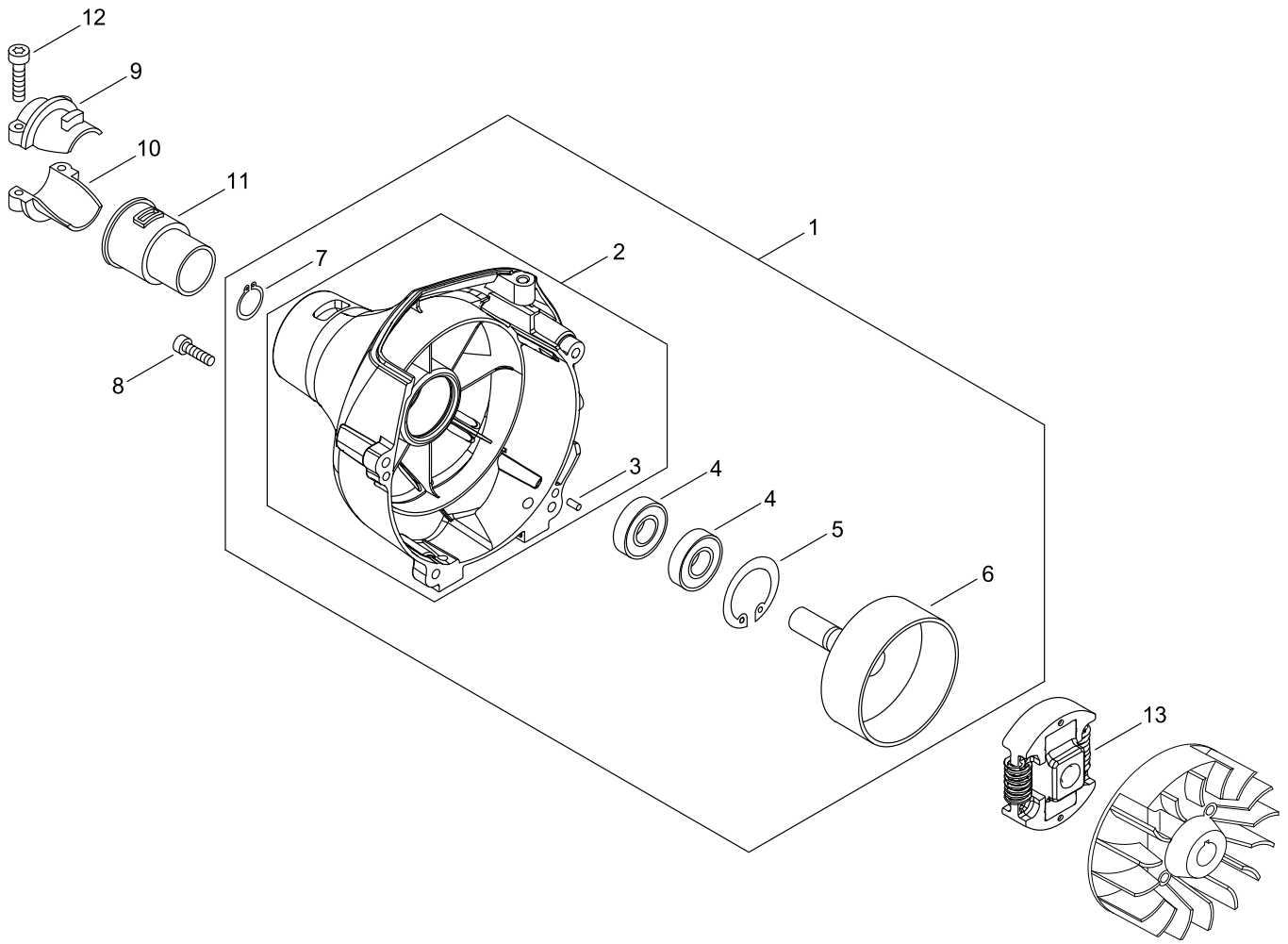
MAGNETO



MAGNETO

Key No.	LV (+)	Part No	Description	Qty	Standard
1		A409-000160	ROTOR,MAGNETO	1	
2		A411-000131	COIL,IGNITION	1	ID#C9148 GT/PE
3		V475-007200	TUBE	1	7*L55
4		V485-001120	LEAD	1	L210 #187 CB104
5		V804-000070	BOLT, TORX 4	2	TB-4*20 12.9
6		A425-000000	SPARKPLUG	1	BPMR8Y
7		A427-000013	CAP,SPARK PLUG	1	
8		A426-000010	TERMINAL,SPARKPLUG	1	

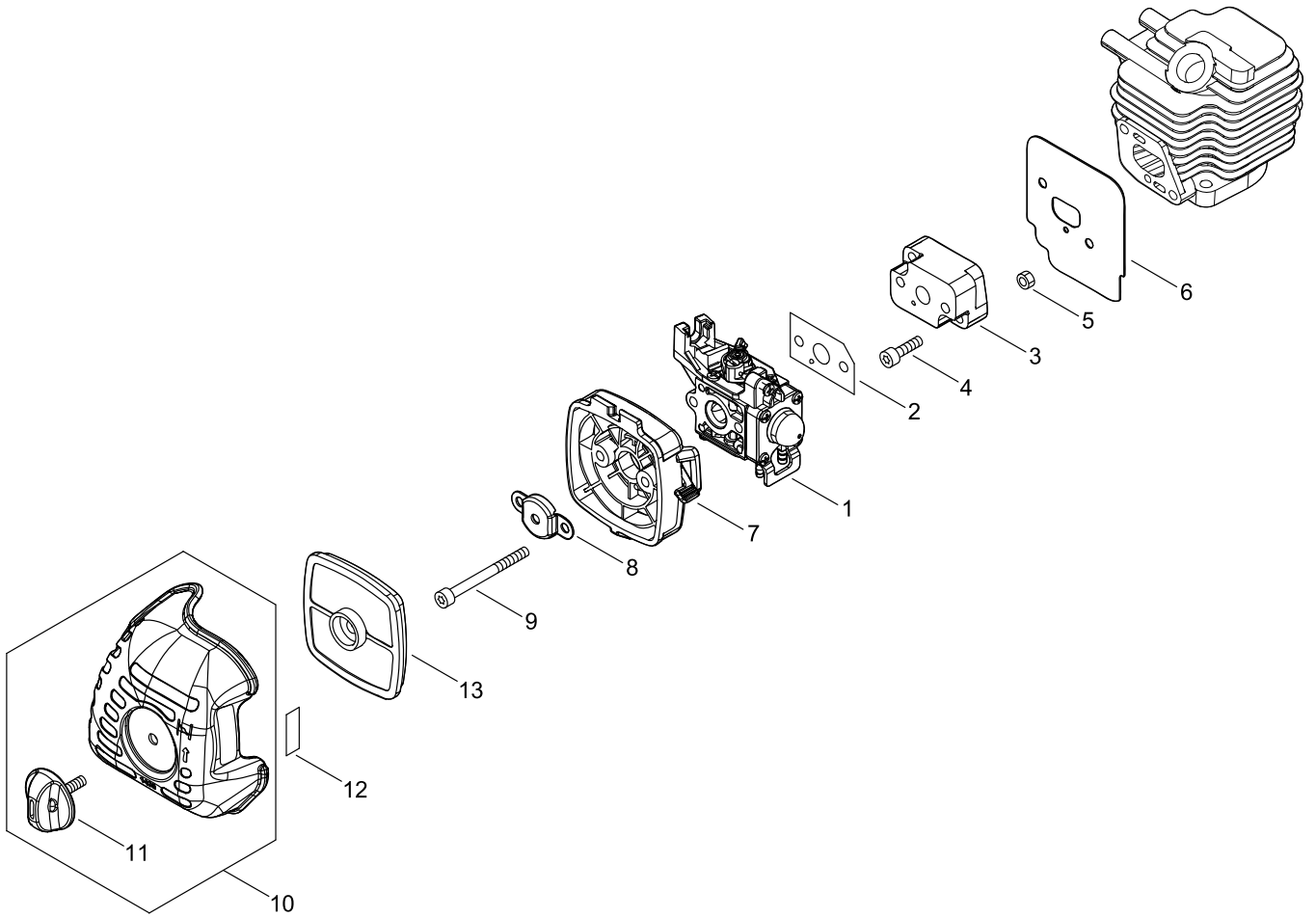
CLUTCH



CLUTCH

Key No.	LV (+)	Part No	Description	Qty	Standard
1		P021-033781	COVER,FAN ASSY	1	
2	+	A172-000861	COVER,FAN	1	
3	++	V622-000020	PIN,STRAIGHT 4	2	4*7.8
4	+	94051-06001	BEARING, BALL	2	PEER RLD GREASE
5	+	900702-00028	CIRCLIP 28	1	CR-28
6	+	A556-000590	DRUM, CLUTCH	1	
7	+	900701-00012	CIRCLIP 12	1	CS-12
8		V804-000060	BOLT, TORX 4	4	TB-4*16 10.9
9		610922-27432	HOLDER	1	
10		610923-55230	HOLDER	1	
11		610910-55230	CUSHION	1	
12		V805-000160	BOLT, TORX 5	2	TB-5*20 10.9
13		A056-000780	CLUTCH ASY	1	22 C0.5 D50 NONR

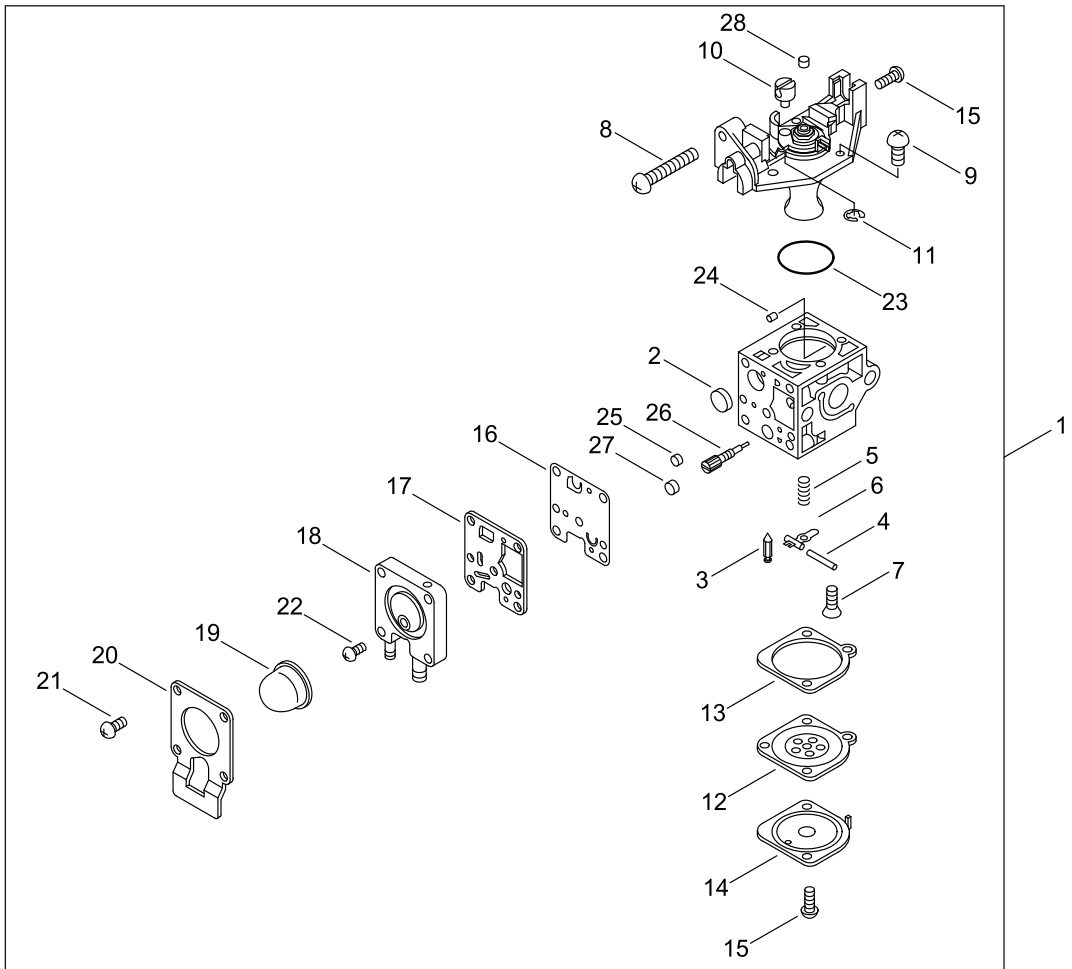
AIR CLEANER, CARBURETOR



AIR CLEANER, CARBURETOR

Key No.	LV (+)	Part No	Description	Qty	Standard
1		A021-003881	CARBURETOR, DIAPHRAGM	1	ZAMA RB-K113
2		V103-001390	GASKET,INTAKE	1	
3		130017-44331	INSULATOR	1	
4		V805-000160	BOLT, TORX 5	2	TB-5*20 10.9
5		900500-00005	NUT 5	2	5
6		V103-001360	GASKET,INTAKE	1	
7		P021-050030	CASE,CLEANER	1	
8		129011-52730	PLATE, PREVENT	1	
9		V805-000100	BOLT, TORX 5	2	TB-5*65 10.9
10		P100-002260	LID,CLEANER ASY	1	
11	+	V299-000250	KNOB,FASTENER	1	
12		X506-000170	LABEL,CHOKE	1	SYMBOLS + T
13		A226-001410	ELEMENT,AIR FILTER	1	

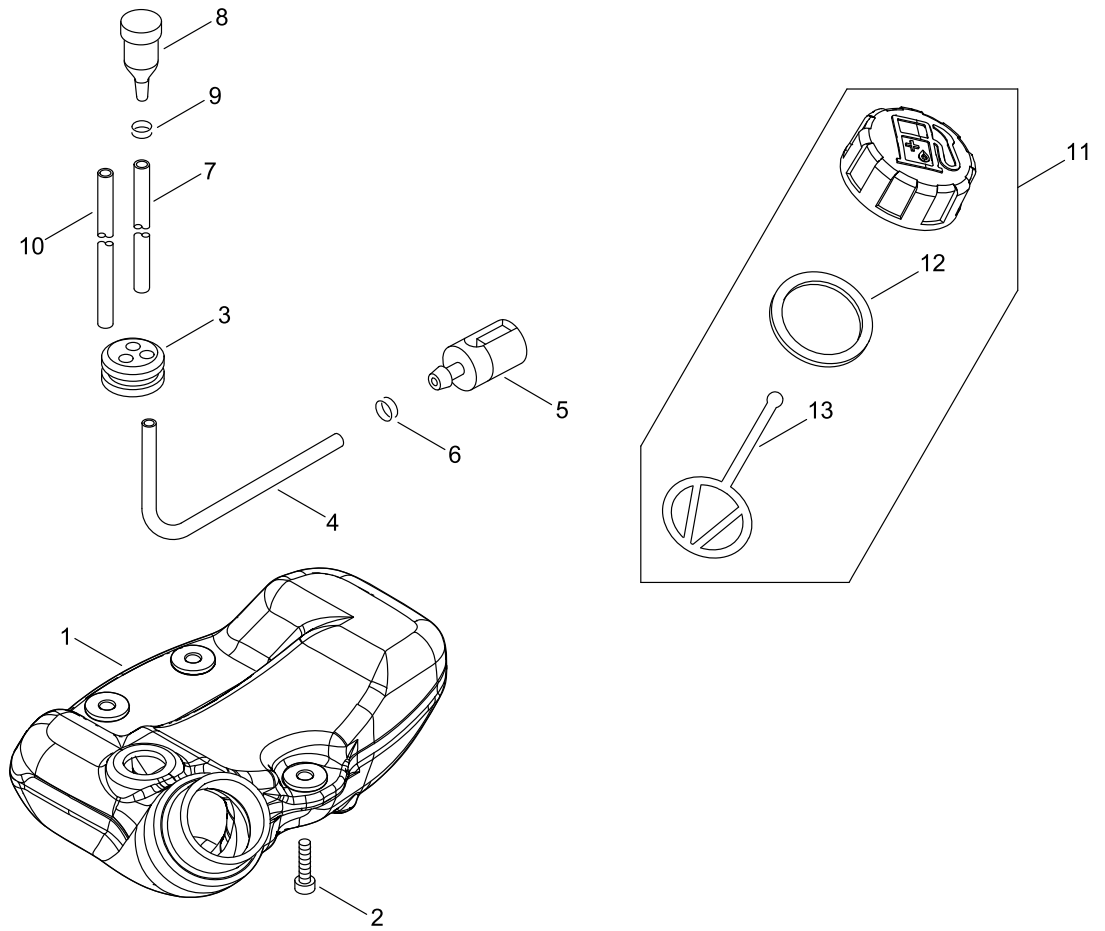
CARBURETOR



CARBURETOR

Key No.	LV (+)	Part No	Description	Qty	Standard
1		A021-003881	CARBURETOR, DIAPHRAGM	1	ZAMA RB-K113
2	+	P005-000010	STRAINER	1	
3	+	125337-08260	VALVE, INLET NEEDLE	1	
4	+	125338-13930	PIN, METERING ARM	1	
5	+	P005-002430	SPRING, MET. LEVER	1	
6	+	125323-08260	ARM, VALVE	1	
7	+	125339-42030	SCREW	1	
8	+	P005-000100	SCREW, THROTTLEADJUST	1	
9	+	125344-13931	SCREW	3	
10	+	P005-001240	POST	1	
11	+	P005-000190	E-RING	1	
12	+	P005-002230	DIAPHRAGM ,METERING	1	
13	+	P005-000200	GASKET, METERING	1	
14	+	125342-52130	COVER, DIAPHRAGM	1	
15	+	125344-52130	SCREW	3	
16	+	P005-000510	DIAPHRAGM, PUMP	1	
17	+	P005-000520	GASKET, PUMP	1	
18	+	P005-001890	BASE, ASY PRIMER	1	
19	+	P005-003110	PUMP, PRIMER	1	
20	+	P005-000250	RETAINER	1	
21	+	P005-001900	SCREW	4	
22	+	P005-000270	SCREW	1	
23	+	P005-000280	O-RING	1	
24	+	P005-001000	ROLLER, GUIDE	1	
25	+	P005-001250	RETAINER,PLUG BALL	1	
26	+	P005-001260	SCREW,MAINN MIXTURE	1	
27	+	P005-001270	PLUG, AJUST SCREW	1	
28	+	A259-000010	CAP,LIMITER	1	

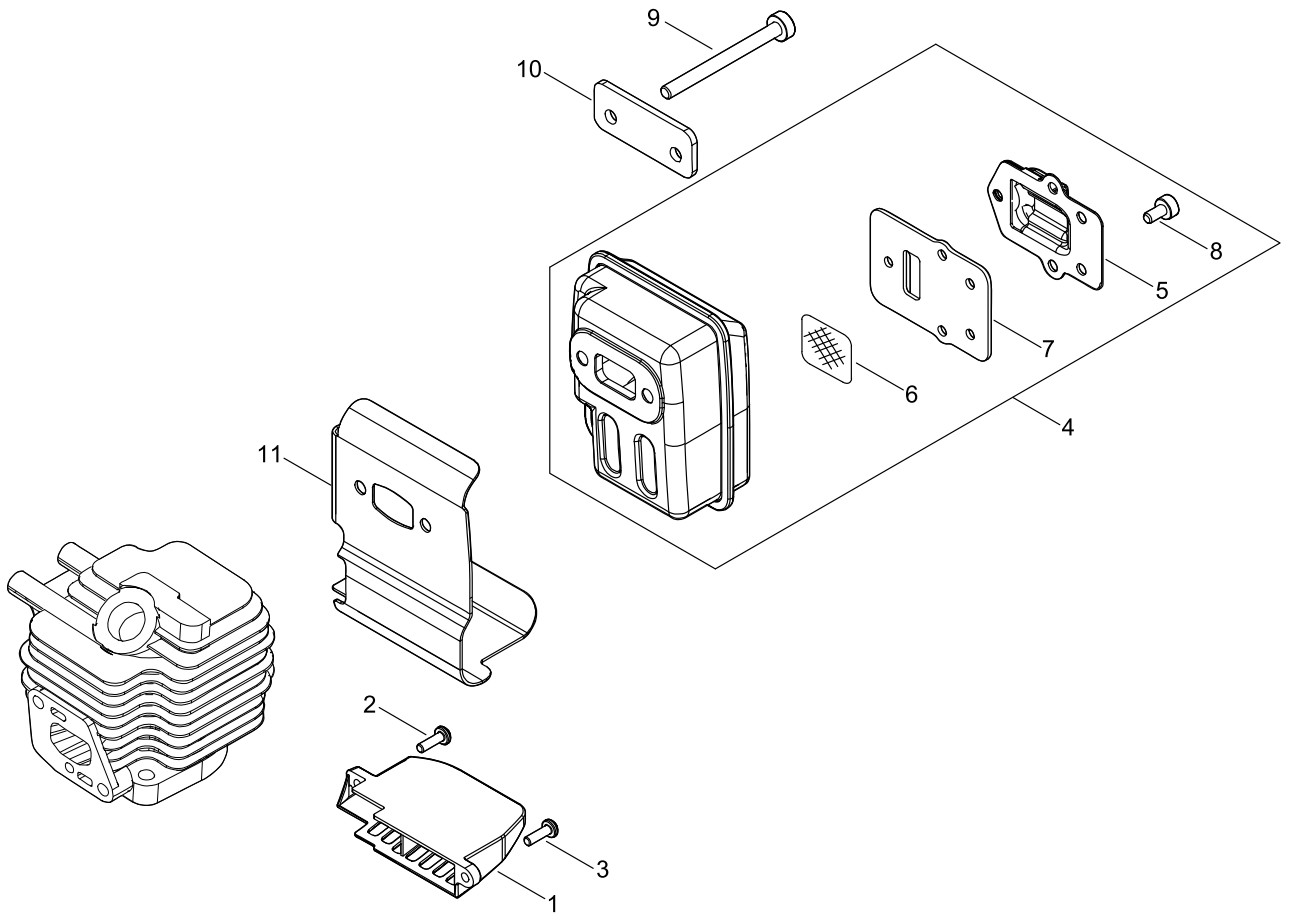
FUEL TANK



FUEL TANK

Key No.	LV (+)	Part No	Description	Qty	Standard
1		A350-002270	TANK, FUEL	1	
2		V805-000160	BOLT, TORX 5	3	TB-5*20 10.9
3		132115-46730	GROMMET, FUEL	1	
4		V470-000841	PIPE	1	Φ5L字L180
5		A369-000480	STRAINER, FUEL	1	125-959
6		V490-001240	CLIP	1	
7		V471-001211	PIPE	1	3*5*90
8		A356-000031	VALVE,CHECK	1	
9		V490-001240	CLIP	1	
10		132012-56030	PIPE	1	3*6*80 YL
11		P021-012211	CAP,FUEL ASY	1	
12	+	V107-000190	GASKET,FUEL CAP	1	37.9*T2.2
13	+	A365-000060	CONNECTOR,CAP	1	L=123

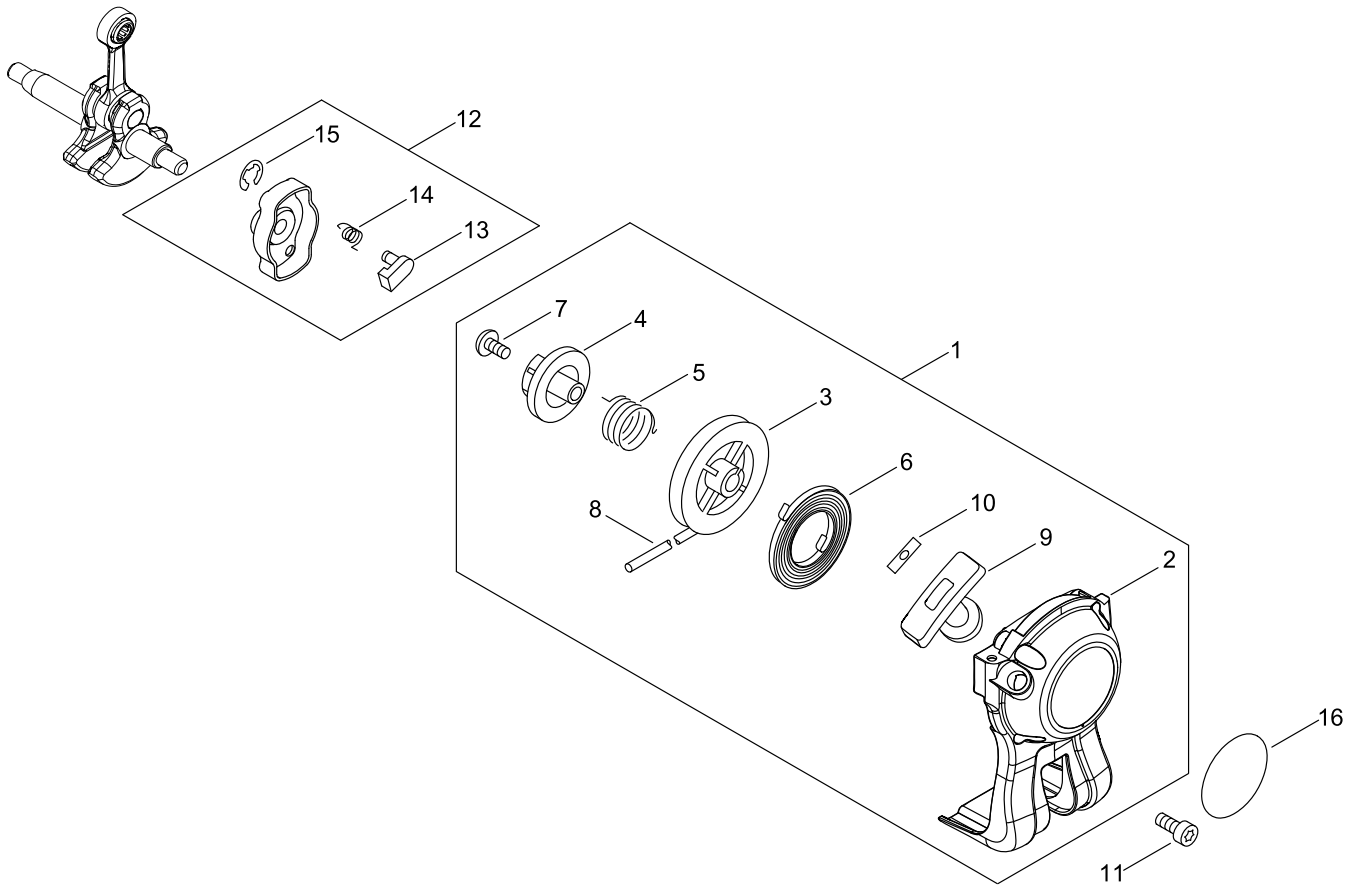
MUFFLER



MUFFLER

Key No.	LV (+)	Part No	Description	Qty	Standard
1		A320-000480	COVER,MUFFLER	1	
2		V805-000000	BOLT, TORX 5	1	TT-5*16 DG 10.9
3		V805-000150	BOLT, TORX 5	1	TB-5*16 10.9
4		P021-047652	MUFFLER ASY	1	
5	+	A313-000600	GUIDE,EXH	1	
6	+	145862-40630	SCREEN, MUFFLER	1	
7	+	V104-001761	GASKET,EXHAUST	1	
8	+	V804-000030	BOLT, TORX 4	5	TB-4*8 10.9
9		V805-000190	BOLT, TORX 5	2	TB-5*55 12.9
10		V150-000371	PLATE,EYE	1	
11		V104-000850	GASKET,EXHAUST	1	T1.0

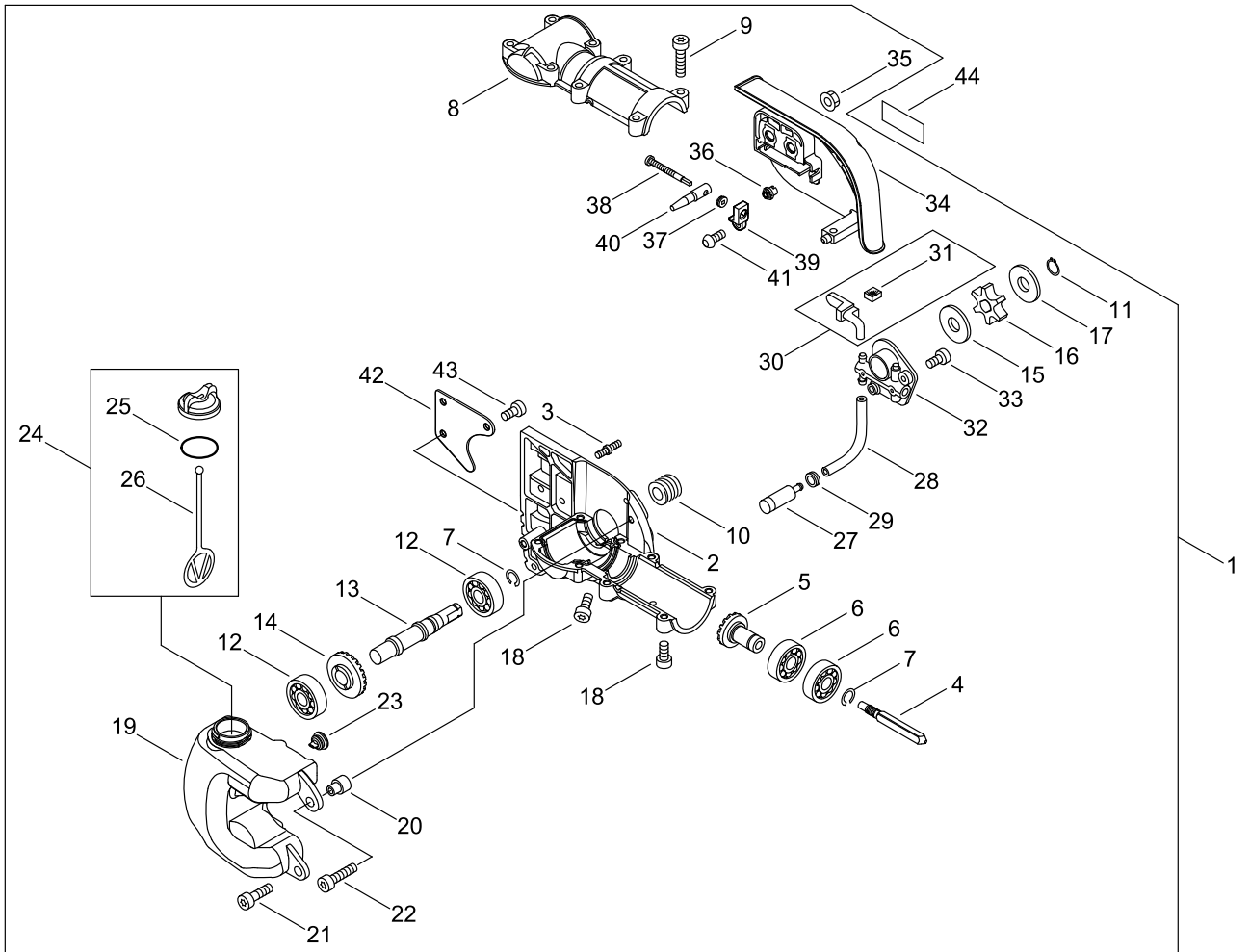
RECOIL STARTER, PULLY



RECOIL STARTER, PULLY

Key No.	LV (+)	Part No	Description	Qty	Standard
1		A051-001312	STARTER,RECOIL ASY	1	
2	+	P022-036970	CASE,STARTER	1	
3	+	P022-034040	DRUM, STARTER	1	
4	+	P022-034030	PLATE, CAM	1	
5	+	P022-008270	SPRING,DAMPER	1	
6	+	P022-019680	SPRING, SPIRAL	1	
7	+	177236-61830	SCREW	1	
8	+	P022-019990	ROPE, STARTER	1	
9	+	177228-27030	GRIP, STARTER	1	
10	+	P022-037670	STOPPER, ROPE	1	
11		V804-000060	BOLT, TORX 4	4	TB-4*16 10.9
12		A052-000180	PULLEY,ASM STARTER	1	
13	+	P022-006850	PAWL, STARTER	2	
14	+	P022-006510	SPRING, RETURN	2	
15	+	P022-002100	E-RING	2	4
16		X502-000330	LABEL,ECHO	1	ECHO

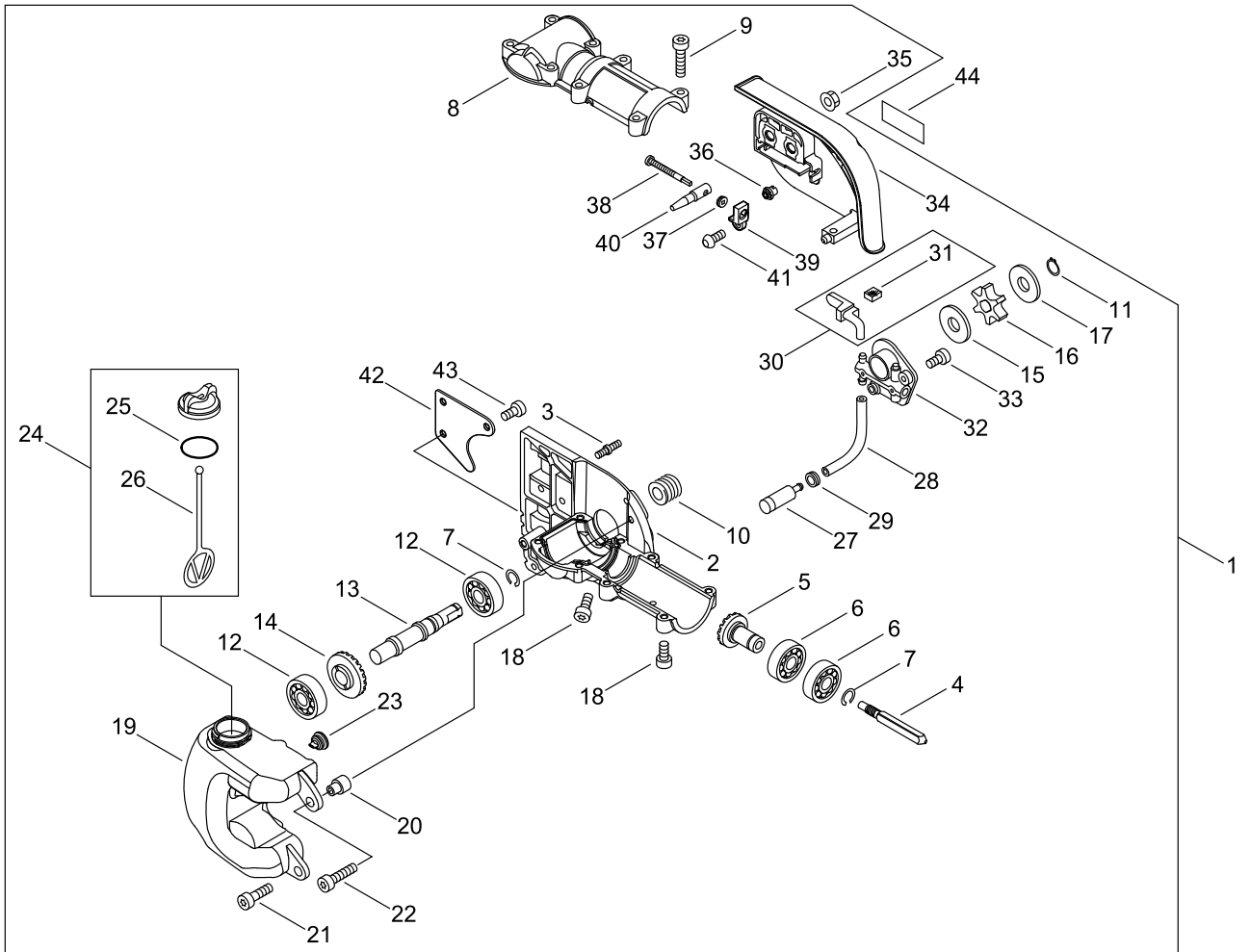
GEAR CASE



GEAR CASE

Key No.	LV (+)	Part No	Description	Qty	Standard
1		P100-007410	CASE ASY, GEAR	1	
2	+	C531-000430	CASE,GEAR	1	LOWER
3	+	V224-000040	BOLT,STUD 6	2	15MM*19MM M6
4	+	610025-22361	CONNECTOR, SHAFT	1	
5	+	V651-001180	GEAR,BEVEL	1	EC-B0306-00
6	+	94052-06001	BEARING BALL	2	PEER LLU,DDU 2RS
7	+	900706-00012	CIRCLIP 12	2	WR-12
8	+	C531-000030	CASE,GEAR	1	
9	+	V805-000170	BOLT, TORX 5	8	TB-5*25 10.9
10	+	437063-38330	GEAR, WORM	1	
11	+	V583-000090	RING	1	EXTERNAL RING
12	+	94052-06001	BEARING BALL	2	PEER LLU,DDU 2RS
13	+	C534-000430	SHAFT, GEAR	1	
14	+	V651-001190	GEAR,BEVEL	1	EC-B0206-00
15	+	175014-39131	WASHER, CLUTCH	1	10.2*24.5*1.2
16	+	C580-000070	SPROCKET,DRIVE	1	
17	+	V307-000160	WASHER,CIRCULAR 10	1	10.2*29.5*T=1.2
18	+	V805-000130	BOLT, TORX 5	2	TB-5*10 10.9
19	+	P100-006460	TANK, OIL	1	
20	+	V354-000010	COLLAR,6	1	
21	+	V805-000160	BOLT, TORX 5	2	TB-5*20 10.9
22	+	V805-000170	BOLT, TORX 5	1	TB-5*25 10.9
23	+	131314-06320	VALVE, CHECK	1	
24	+	P021-005591	CAP ASY	1	
25	++	900720-00018	O-RING 18	1	P-18
26	++	A365-000050	CONNECTOR,CAP	1	
27	+	P100-001900	STRAINER, OIL	1	
28	+	130110-12331	PIPE 3* 6* 70	1	3*6*70
29	+	132115-01462	GROMMET	1	
30	+	P100-003331	PIPE OIL ASY	1	
31	++	437244-39130	PAD, FORM	1	
32	+	C022-000010	OILER,ASM AUTO	1	
33	+	V805-000130	BOLT, TORX 5	2	TB-5*10 10.9
34	+	C300-000920	GUARD, SPROCKET	1	COVER W/ SCREW
35	+	433019-03933	NUT, FLANGE 6	2	6
36	+	V651-000320	GEAR,BEVEL	1	14 TEETH 10MM LG
37	+	V651-000310	GEAR,BEVEL	1	14 TEETH 3.0 SQ.
38	+	V203-000041	BOLT,5	1	
39	+	V355-000140	COLLAR,8	1	
40	+	C309-000030	TENSIONER,CHAIN	1	
41	+	V252-000040	SCREW,4	1	4*8 PT SCREW
42	+	C649-000140	HOOK	1	BRANCH HOOK

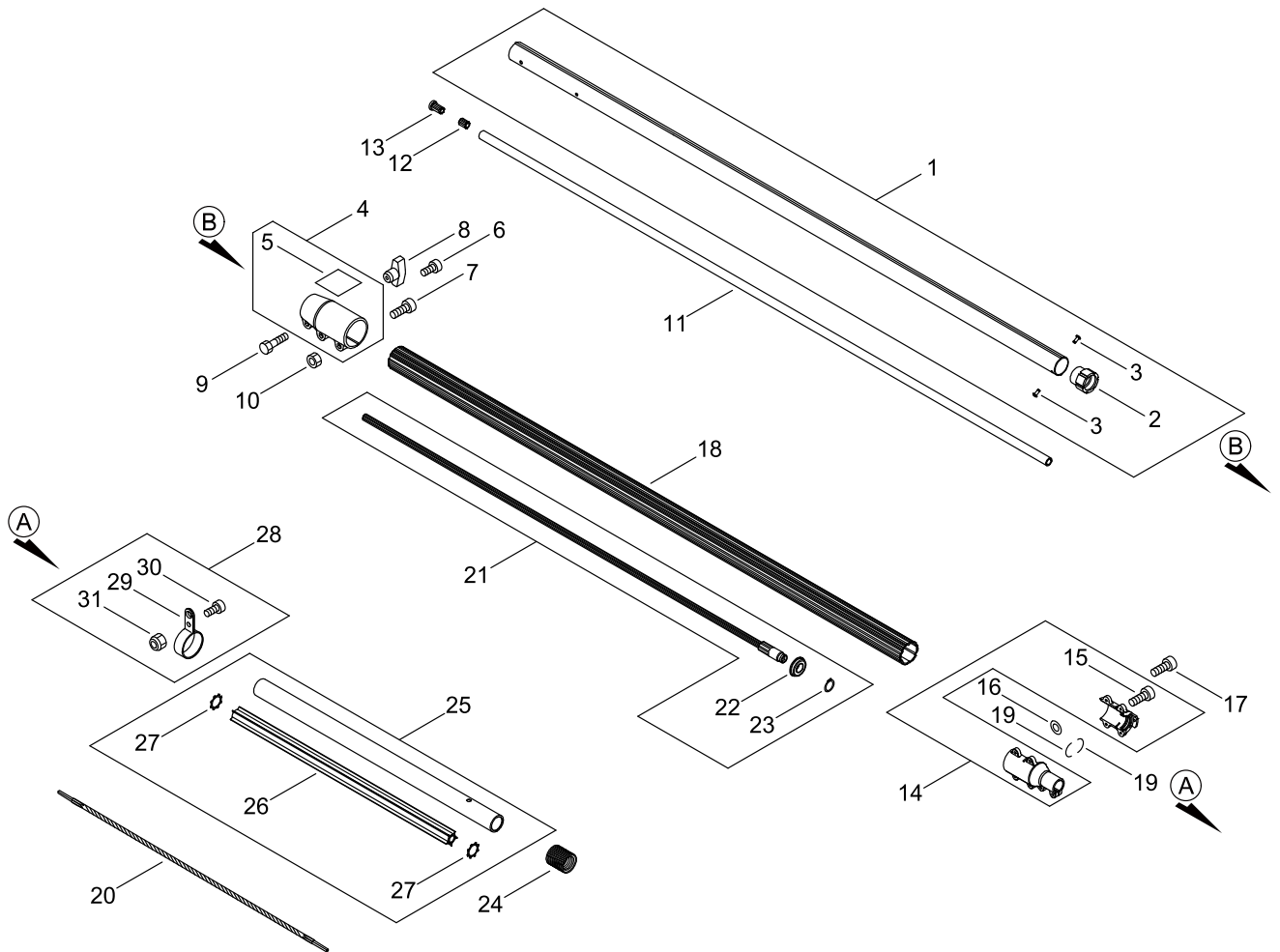
GEAR CASE



GEAR CASE

Key No.	LV (+)	Part No	Description	Qty	Standard
43	+	V805-000130	BOLT, TORX 5	3	TB-5*10 10.9
44		X502-000600	LABEL,ECHO	1	48MM*15MM + ECHO

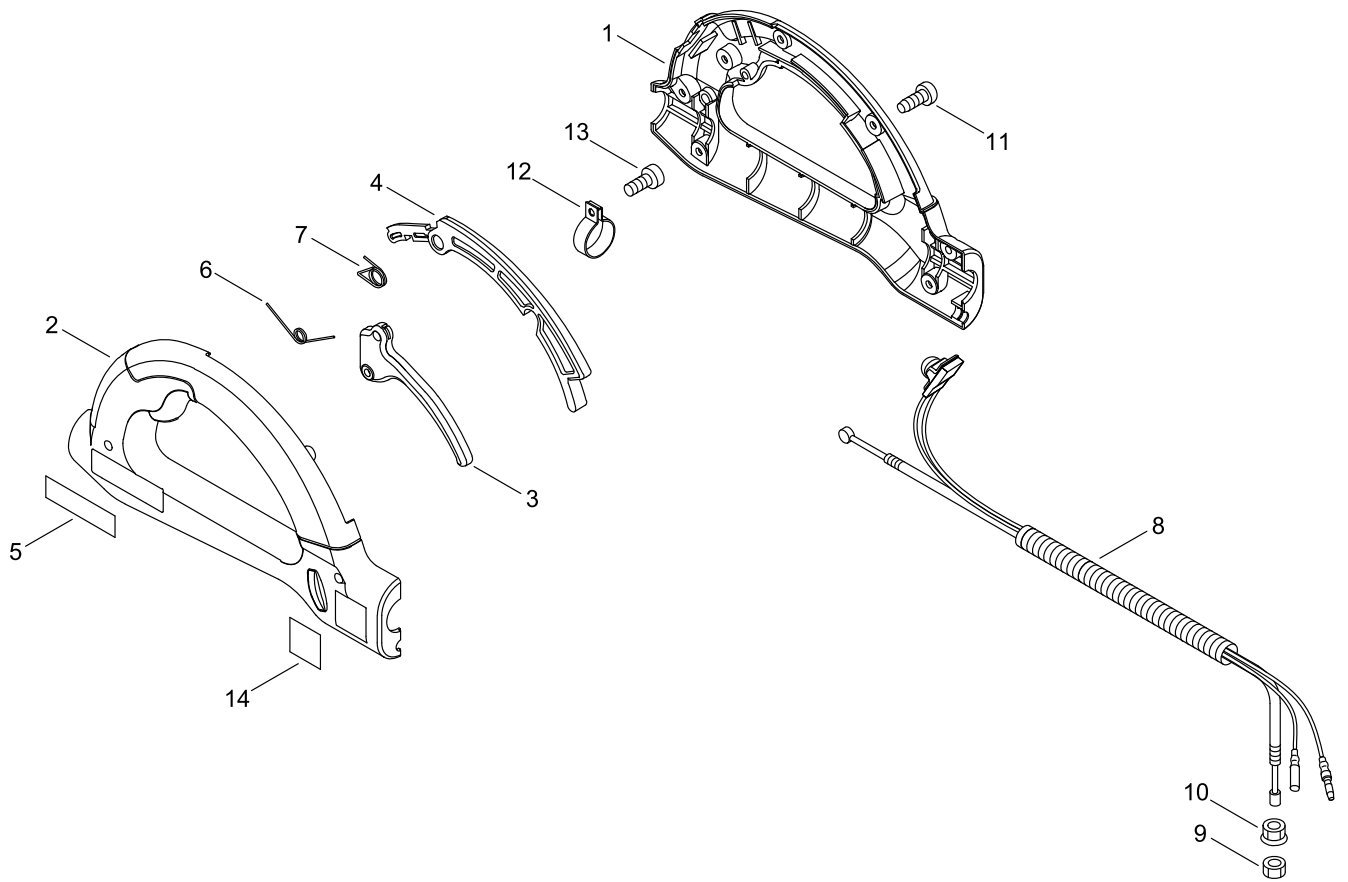
MAIN PIPE



MAIN PIPE

Key No.	LV (+)	Part No	Description	Qty	Standard
1		C050-000760	PIPE, MAIN	1	
2	+	C503-000080	HOLDER, BEARING	1	HOLDER ASSEMBLY
3	+	890011-22360	RIVET	2	
4		P100-006500	COUPLING,MAIN PIPE	1	
5	+	X505-002372	LABEL,CAUTION	1	15M-50FT PRUNER
6		V805-000140	BOLT, TORX 5	1	TB-5*12 10.9
7		V805-000160	BOLT, TORX 5	2	TB-5*20 10.9
8		V299-000660	KNOB,FASTENER	1	M6X1 WING ASS'Y
9		900100-06025	BOLT 6*25	1	6*25
10		900500-00005	NUT 5	2	5
11		C504-000360	SHAFT, DRIVE	1	OUTER DRIVESHAFT
12		C509-000090	SOCKET,SHAFT	1	DRIVE SIDE
13		C509-000080	SOCKET, SHAFT	1	12.2*16.5*25.4
14		C510-000193	COUPLING, MAIN PIPE	1	COUPLING ASS'Y
15	+	V805-000160	BOLT, TORX 5	2	TB-5*20 10.9
16		V303-000071	WASHER,CIRCULAR 5	2	5.4MM*15MM*1MM
17		V805-000160	BOLT, TORX 5	4	TB-5*20 10.9
18		C500-000271	PIPE, MAIN	1	
19		V420-001810	CUSHION	2	OD 3.53MM*42 LNG
20		C506-000100	SHAFT, FLEXIBLE	1	.264/.260 * 19.8
21		C504-000372	SHAFT, DRIVE	1	CORE/SHAFT ASSY
22	+	94057-36002	BEARING, BALL	1	PEER LLU,DDU
23	+	100229-22460	RING	1	
24		V475-004000	TUBE	1	25MM*32MM*35MM
25		C050-002820	PIPE, MAIN	1	
26	+	C507-000160	LINER, FLEXIBLE	1	L=410MM
27	+	V583-000110	RING	2	.625ID * .875OD
28		P021-049240	HANGER ASY	1	
29	+	300610-22061	BRACKET, HARNESS	1	24.69/24.84 I.D.
30	+	V805-000130	BOLT, TORX 5	1	TB-5*10 10.9
31	+	V263-000080	NUT,5	1	M5*0.8 LOCK NUT

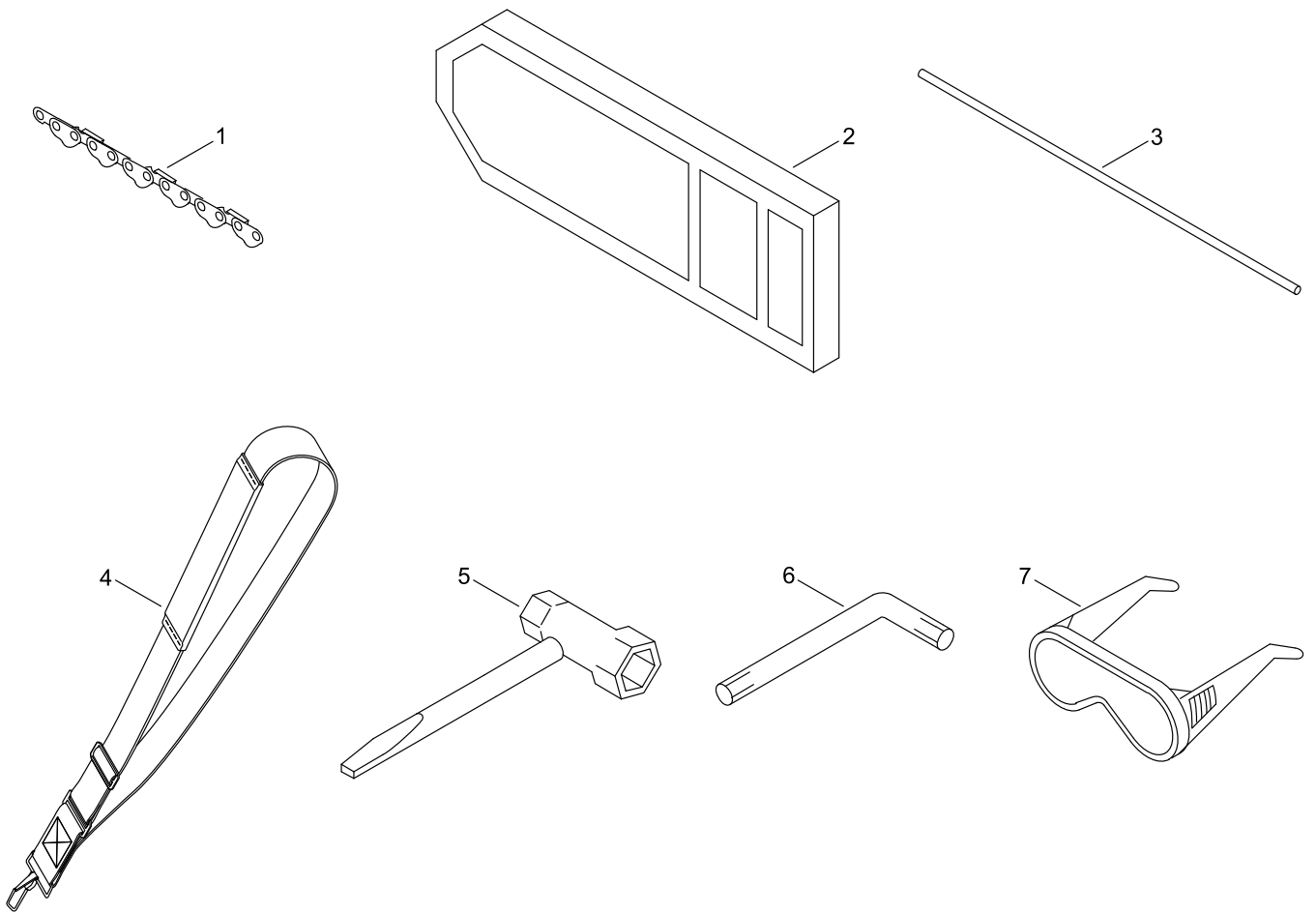
THROTTLE



THROTTLE

Key No.	LV (+)	Part No	Description	Qty	Standard
1		C041-000001	HANDLE,ASM REAR	1	OVERMOLD - RIGHT
2		C041-000011	HANDLE,ASM REAR	1	OVERMOLD - LEFT
3		C450-000260	CONTROL, THROTTLE	1	PPT HANDLE
4		C460-000100	LOCKOUT, THROTTLE	1	PPT HANDLE
5		X502-000610	LABEL,ECHO	2	62MM*16MM + ECHO
6		V452-000330	SPRING,TORSION	1	30MM*8 DIA.*30MM
7		V452-000340	SPRING,TORSION	1	10.5MM I.D.
8		P021-033760	CABLE ASY, CONTROL	1	
9		900502-00006	NUT 6 (3N)	1	3N6
10		900518-00006	NUT, FLANGE	1	6
11		V805-000000	BOLT, TORX 5	7	TT-5*16 DG 10.9
12		V495-003020	BAND	2	
13		V805-000150	BOLT, TORX 5	2	TB-5*16 10.9
14		X505-002362	LABEL,CAUTION	1	4-ISO SYMBOLS

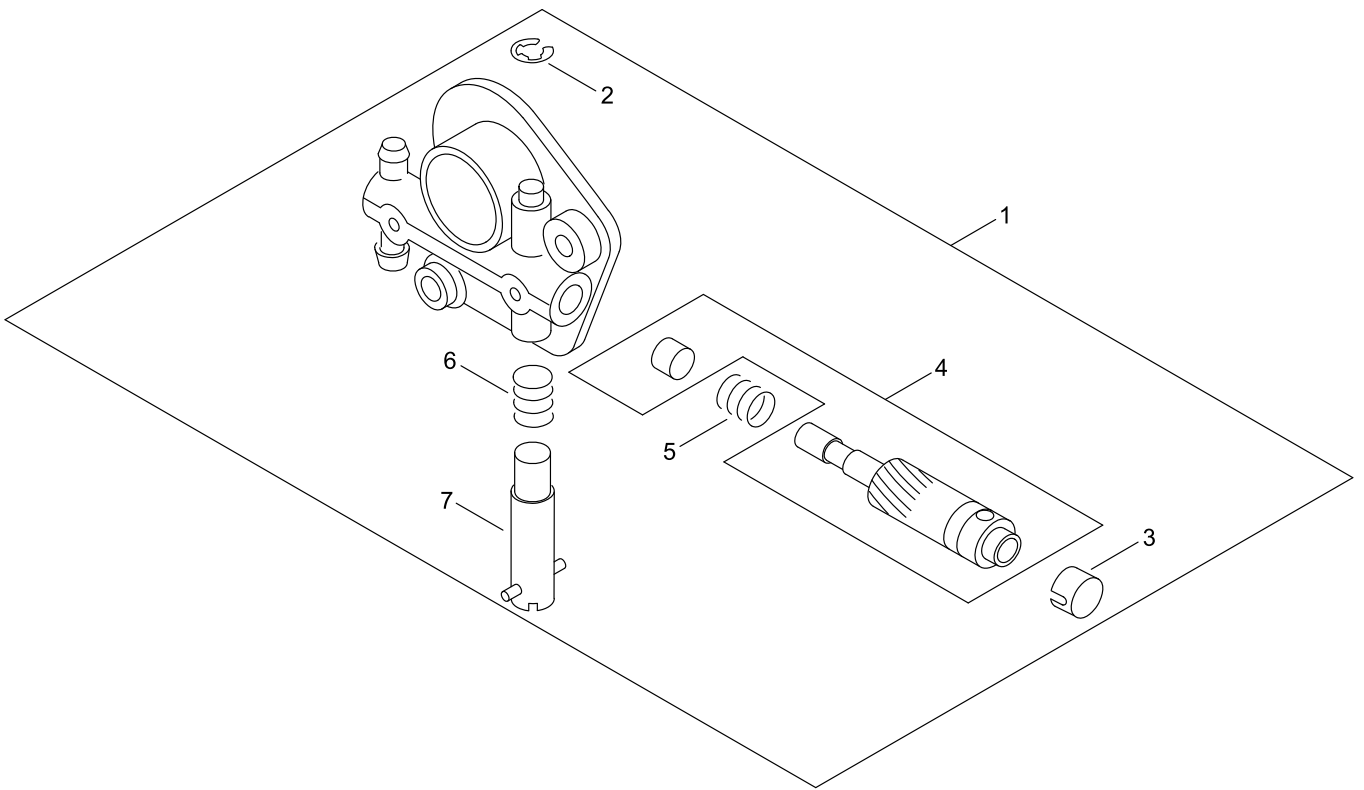
ACCESSORIES



ACCESSORIES

Key No.	LV (+)	Part No	Description	Qty	Standard
1		X221-000070	CHAIN,SAW	1	
2		X490-000060	SCABBARD,CHAIN	1	
3		X474-000000	CORD	1	
4		301000-22060	HARNES ASY, SHOULDER	1	
5		895410-39132	WRENCH, W/S-DRIVER	1	
6		X605-000060	TOOL,L WRENCH	1	80*30 T27 2- ENDS
7		X690-000080	GOGGLE	1	SI CHINA, Z87.1

OILER



OILER

Key No.	LV (+)	Part No	Description	Qty	Standard
1		C022-000010	OILER,ASM AUTO	1	
2	+	125327-15130	CLIP	1	
3	+	P022-010640	CAP, OIL PUMP	1	
4	+	P022-010650	PLUNGER	1	
5	+	P022-010660	SPRING	1	
6	+	P022-010670	SPRING	1	
7	+	P022-010680	SCREW ASS'Y, ADJUST	1	

NUMERICAL PARTS INDEX

Part No	Part description	Page	Part No	Part description	Page	Part No	Part description	Page
100013-11520	PIN, PISTON	2	900502-00006	NUT 6 (3N)	26	C460-000100	LOCKOUT, THROTTLE	26
100014-11520	SPACER, PISTON PIN	2	900518-00006	NUT, FLANGE	26	C500-000271	PIPE, MAIN	24
100015-04630	CIRCLIP, PISTON PIN	2	900701-00012	CIRCLIP 12	8	C503-000080	HOLDER, BEARING	24
100212-42031	OILSEAL	4	900702-00028	CIRCLIP 28	8	C504-000360	SHAFT, DRIVE	24
100229-22460	RING	24	900706-00012	CIRCLIP 12	20	C504-000372	SHAFT, DRIVE	24
100242-42030	GASKET, CRANKCASE	4	900720-00018	O-RING 18	20	C506-000100	SHAFT, FLEXIBLE	24
101010-44332	GASKET, CYL. BASE	2	94035-36201	BEARING BALL	4	C507-000160	LINER, FLEXIBLE	24
125323-08260	ARM, VALVE	12	94051-06001	BEARING, BALL	8	C509-000080	SOCKET, SHAFT	24
125327-15130	CLIP	30	94052-06001	BEARING BALL	20	C509-000090	SOCKET,SHAFT	24
125337-08260	VALVE, INLET NEEDLE	12	94057-36002	BEARING, BALL	24	C510-000193	COUPLING, MAIN PIPE	24
125338-13930	PIN, METERING ARM	12	A011-001410	CRANKSHAFT,ASY	2	C531-000030	CASE,GEAR	20
125339-42030	SCREW	12	A021-003881	CARBURETOR, DIAPHRAGM	10	C531-000430	CASE,GEAR	20
125342-52130	COVER, DIAPHRAGM	12	A021-003881	CARBURETOR, DIAPHRAGM	12	C534-000430	SHAFT, GEAR	20
125344-13931	SCREW	12	A051-001312	STARTER,RECOIL ASY	18	C580-000070	SPROCKET,DRIVE	20
125344-52130	SCREW	12	A052-000180	PULLEY,ASM STARTER	18	C649-000140	HOOK	20
129011-52730	PLATE, PREVENT	10	A056-000780	CLUTCH ASY	8	P005-000010	STRAINER	12
130017-44331	INSULATOR	10	A101-000090	RING,PISTON	2	P005-000100	SCREW, THROTTLEADJUST	12
130110-12331	PIPE 3* 6* 70	20	A130-002100	CYLINDER	2	P005-000190	E-RING	12
131314-06320	VALVE, CHECK	20	A160-001090	COVER,CYLINDER	2	P005-000200	GASKET, METERING	12
132012-56030	PIPE	14	A172-000861	COVER,FAN	8	P005-000250	RETAINER	12
132115-01462	GROMMET	20	A226-001410	ELEMENT,AIR FILTER	10	P005-000270	SCREW	12
132115-46730	GROMMET, FUEL	14	A259-000010	CAP,LIMITER	12	P005-000280	O-RING	12
145862-40630	SCREEN, MUFFLER	16	A313-000600	GUIDE,EXH	16	P005-000510	DIAPHRAGM, PUMP	12
159116-21231	CLAMP	4	A320-000480	COVER,MUFFLER	16	P005-000520	GASKET, PUMP	12
162014-27230	LEAD, GROUND	4	A350-002270	TANK, FUEL	14	P005-001000	ROLLER, GUIDE	12
175014-39131	WASHER, CLUTCH	20	A356-000031	VALVE,CHECK	14	P005-001240	POST	12
177228-27030	GRIP, STARTER	18	A365-000050	CONNECTOR,CAP	20	P005-001250	RETAINER,PLUG BALL	12
177236-61830	SCREW	18	A365-000060	CONNECTOR,CAP	14	P005-001260	SCREW,MAINN MIXTURE	12
300610-22061	BRACKET, HARNESS	24	A369-000480	STRAINER, FUEL	14	P005-001270	PLUG, AJUST SCREW	12
301000-22060	HARNESS ASY, SHOULDER	28	A409-000160	ROTOR,MAGNETO	6	P005-001890	BASE, ASY PRIMER	12
433019-03933	NUT, FLANGE 6	20	A411-000131	COIL,IGNITION	6	P005-001900	SCREW	12
437063-38330	GEAR, WORM	20	A425-000000	SPARKPLUG	6	P005-002230	DIAPHRAGM ,METERING	12
437244-39130	PAD, FORM	20	A426-000010	TERMINAL,SPARKPLUG	6	P005-002430	SPRING, MET. LEVER	12
610025-22361	CONNECTOR, SHAFT	20	A427-000013	CAP,SPARK PLUG	6	P005-003110	PUMP, PRIMER	12
610910-55230	CUSHION	8	A556-000590	DRUM, CLUTCH	8	P021-005591	CAP ASY	20
610922-27432	HOLDER	8	C022-000010	OILER,ASM AUTO	20	P021-007712	PISTON KIT	2
610923-55230	HOLDER	8	C022-000010	OILER,ASM AUTO	30	P021-012211	CAP,FUEL ASY	14
890011-22360	RIVET	24	C041-000001	HANDLE,ASM REAR	26	P021-033760	CABLE ASY, CONTROL	26
895410-39132	WRENCH, W/S-DRIVER	28	C041-000011	HANDLE,ASM REAR	26	P021-033781	COVER,FAN ASSY	8
900100-06025	BOLT 6*25	24	C050-000760	PIPE, MAIN	24	P021-047652	MUFFLER ASY	16
900162-05022	BOLT, H.S. 5*22	2	C050-002820	PIPE, MAIN	24	P021-049240	HANGER ASY	24
900162-05028	BOLT, H.S. 5*28	4	C300-000920	GUARD, SPROCKET	20	P021-050030	CASE,CLEANER	10
900500-00005	NUT 5	10	C309-000030	TENSIONER,CHAIN	20	P022-002100	E-RING	18
900500-00005	NUT 5	24	C450-000260	CONTROL, THROTTLE	26	P022-006510	SPRING, RETURN	18

NUMERICAL PARTS INDEX

Part No	Part description	Page	Part No	Part description	Page	Part No	Part description	Page
P022-006850	PAWL, STARTER	18	V495-003020	BAND	26	X690-000080	GOGGLE	28
P022-008270	SPRING,DAMPER	18	V553-000060	BEARING,NEEDLE 8	2			
P022-010640	CAP, OIL PUMP	30	V583-000090	RING	20			
P022-010650	PLUNGER	30	V583-000110	RING	24			
P022-010660	SPRING	30	V622-000020	PIN,STRAIGHT 4	8			
P022-010670	SPRING	30	V651-000310	GEAR,BEVEL	20			
P022-010680	SCREW ASS'Y, ADJUST	30	V651-000320	GEAR,BEVEL	20			
P022-019680	SPRING, SPIRAL	18	V651-001180	GEAR,BEVEL	20			
P022-019990	ROPE, STARTER	18	V651-001190	GEAR,BEVEL	20			
P022-034030	PLATE, CAM	18	V804-000030	BOLT, TORX 4	16			
P022-034040	DRUM, STARTER	18	V804-000060	BOLT, TORX 4	8			
P022-036970	CASE,STARTER	18	V804-000060	BOLT, TORX 4	18			
P022-037670	STOPPER, ROPE	18	V804-000070	BOLT, TORX 4	6			
P100-001870	CRANKCASE SET	4	V805-000000	BOLT, TORX 5	2			
P100-001900	STRAINER, OIL	20	V805-000000	BOLT, TORX 5	16			
P100-002260	LID,CLEANER ASY	10	V805-000000	BOLT, TORX 5	26			
P100-003331	PIPE OIL ASY	20	V805-000100	BOLT, TORX 5	10			
P100-006460	TANK, OIL	20	V805-000130	BOLT, TORX 5	4			
P100-006500	COUPLING,MAIN PIPE	24	V805-000130	BOLT, TORX 5	20			
P100-007410	CASE ASY, GEAR	20	V805-000130	BOLT, TORX 5	22			
V103-001360	GASKET,INTAKE	10	V805-000130	BOLT, TORX 5	24			
V103-001390	GASKET,INTAKE	10	V805-000140	BOLT, TORX 5	24			
V104-000850	GASKET,EXHAUST	16	V805-000150	BOLT, TORX 5	2			
V104-001761	GASKET,EXHAUST	16	V805-000150	BOLT, TORX 5	16			
V107-000190	GASKET,FUEL CAP	14	V805-000150	BOLT, TORX 5	26			
V150-000371	PLATE,EYE	16	V805-000160	BOLT, TORX 5	8			
V203-000041	BOLT,5	20	V805-000160	BOLT, TORX 5	10			
V224-000040	BOLT,STUD 6	20	V805-000160	BOLT, TORX 5	14			
V252-000040	SCREW,4	20	V805-000160	BOLT, TORX 5	20			
V263-000080	NUT,5	24	V805-000160	BOLT, TORX 5	24			
V299-000250	KNOB,FASTENER	10	V805-000170	BOLT, TORX 5	20			
V299-000660	KNOB,FASTENER	24	V805-000190	BOLT, TORX 5	16			
V303-000071	WASHER,CIRCULAR 5	24	X221-000070	CHAIN,SAW	28			
V307-000160	WASHER,CIRCULAR 10	20	X474-000000	CORD	28			
V354-000010	COLLAR,6	20	X490-000060	SCABBARD,CHAIN	28			
V355-000140	COLLAR,8	20	X502-000330	LABEL,ECHO	18			
V420-001810	CUSHION	24	X502-000600	LABEL,ECHO	22			
V452-000330	SPRING,TORSION	26	X502-000610	LABEL,ECHO	26			
V452-000340	SPRING,TORSION	26	X505-002362	LABEL,CAUTION	26			
V470-000841	PIPE	14	X505-002372	LABEL,CAUTION	24			
V471-001211	PIPE	14	X505-008220	LABEL,CAUTION	2			
V475-004000	TUBE	24	X506-000170	LABEL,CHOKE	10			
V475-007200	TUBE	6	X524-001901	LABEL	2			
V485-001120	LEAD	6	X547-002680	LABEL,ECHO	2			
V490-001240	CLIP	14	X605-000060	TOOL,L WRENCH	28			