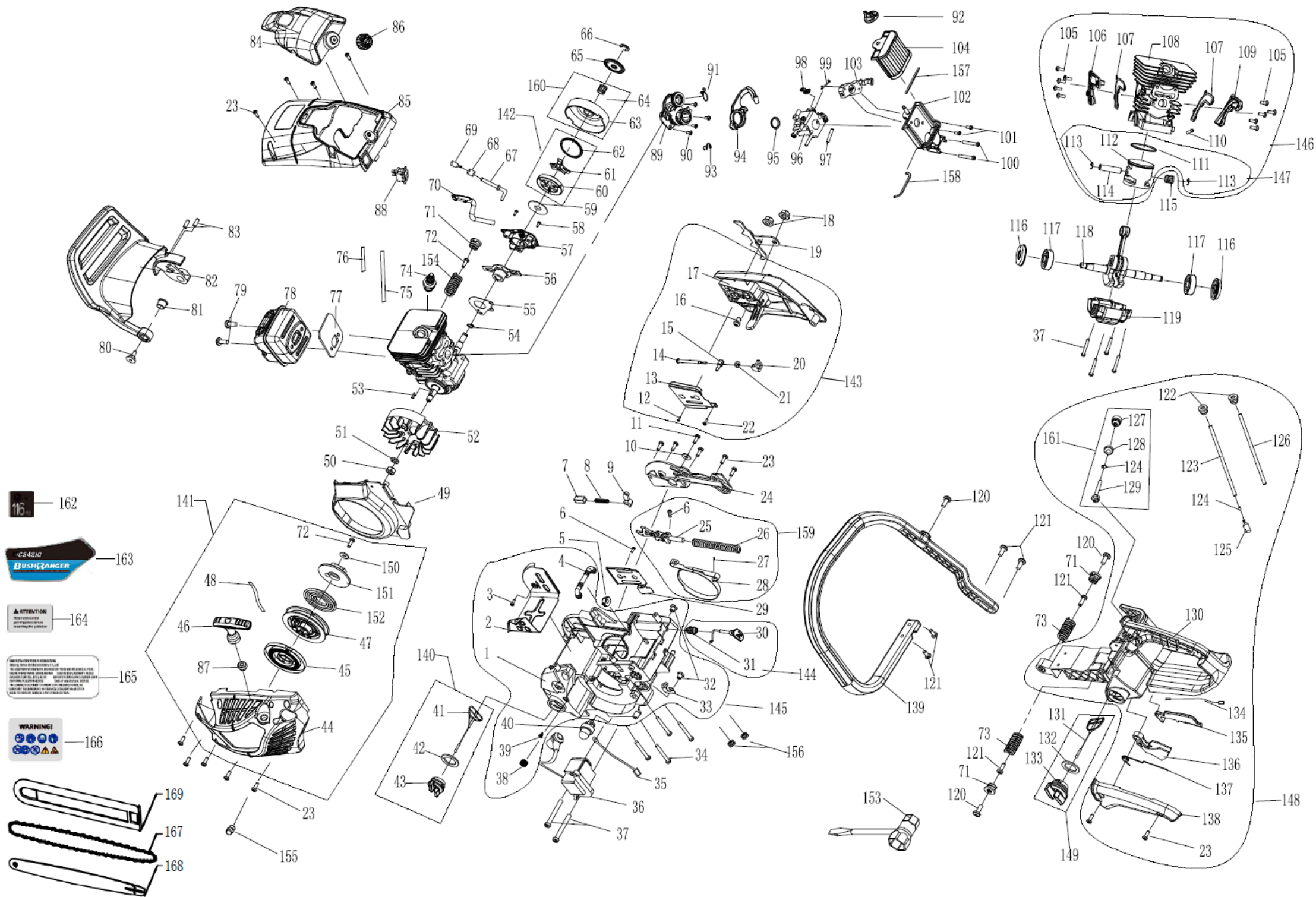


BUSH RANGER[®]

P O W E R E Q U I P M E N T

bushrangerpe.com.au

Illustrated Parts List - BRUZCS4210



CS4210 CHAINSAW

No.	Part No.	Description	Required Quantity
1	3001001306	ENGINE COVER	1
2	4018005105	SPACER	1
3	5010235101	SCREW	1
4	4018002135	POSITIONING RUBBER BLOCK	1
5	4007018101	INLET PIPE COVER	1
6	5010335081	SCREW	2
7	4011016103	POSITIONING SPRING SEAT	1
8	4011016102	POSITIONING SPRING	1
9	4011005102	BRAKE SPRING COVER	1
10	5050105161	WASHER	1
11	5010548121	SCREW	1
12	5010103061	SCREW	1
13	4011015101	SPROCKET GUARD PLATE	1
14	4015003101	TENSIONER PASSIVE BOLT	1
15	4015004101	TENSION PIN	1
16	4015001103	CHAIN TENSION ADJUSTER	1
17	3001011324	CLUTCH COVER	1
18	5020908001	NUT M8	2
19	4000011101	SPIKED BUMPER	1
20	4015011101	BEVEL GEAR SEAT	1
21	4015002103	BEVEL GEAR	1
22	5010242092	SCREW	1
23	5010342141	SCREW	16
24	3001015105	BRAKE SPRING COVER	1
25	4011004203	BRAKE LEVER ASS'Y	1
26	4011001107	BRAKE SPRING	1
27	5040103091	PIN	1
28	4011003106	BRAKE STOPPER	1
29	4014008105	GUIDE PLATE	1
30	3001034311	CHOKE ROD	1
31	4008004103	CUSHION	1

CS4210 CHAINSAW

No.	Part No.	Description	Required Quantity
32	5020905091	NUT	2
33	4009006108	GROUND PLATE(I)	1
34	5010705323	SCREW	4
35	4009003110	CORD	1
36	4009002312	IGNITION ASS'Y	1
37	5010705251	SCREW	6
38	4014012101	BREATHER PLUG	1
39	4014010105	BREATHER	1
40	4007016101	FUEL PRIMER ASS'Y	1
41	3001029301	CAP LINK	1
42	4014009101	OIL TANK CAP GASKET	1
43	3001025108	OIL CAP	1
44	3001012304	STARTER COVER ASS'Y	1
45	4012001201	RECOIL SPRING	1
46	3001024108	STARTER KNOB	1
47	4012015107	EASY STARTER REEL	1
48	4012003102	NYLON ROPE 3*900	1
49	3001014111	FAN COVER	1
50	5020108001	NUT M8	1
51	5050208002	SPRING WASHER 8	1
52	4009001309	FLYWHEEL ASS'Y	1
53	5060103101	WOODRUFF KEY	1
54	5070111001	SHAFT CIRCLIP 11	1
55	4014017101	OIL PUMP SEAL PLATE	1
56	4014006307	NYLON WORM	1
57	4014001203	OIL PUMP	1
58	5010404151	SCREW	2
59	4010005102	WEDGE BRACKET WASHER	1
60	4010001102	WEDGE	3
61	4010002102	WEDGE BRACKET	1
62	4010003102	CLUTCH SPRING	1

CS4210 CHAINSAW

No.	Part No.	Description	Required Quantity
63	4010004307	CLUTCH DRUM	1
64	5080808131	NEEDLE BEARING	1
65	4010005107	WASHER	1
66	5070306001	CLIP 6	1
67	4014004108	OIL PUMP PIPE(I)	1
68	4014011101	OIL FILTER WEIGHT	1
69	4014002202	OIL FILTER ASS'Y	1
70	4014005107	OIL PUMP PIPE(O)	1
71	3001064106	SPRING SEAT	3
72	5010405141	SCREW	2
73	4013001111	DAMPING SPRING	2
74	4009004101	SPARK PLUG	1
75	4007004126	VACUUM TUBE	1
76	4007008101	VACUUM TUBE BUSHING	1
77	4019003109	MUFFLER GASKET	1
78	4006001226	MUFFLER(CATALYST)	1
79	5010606161	SCREW	2
80	5011604121	SCREW	1
81	4011014103	BUSHING	1
82	3001036110	BRAKE LEVER ASS'Y	1
83	5040105131	PIN	2
84	3001010129	AIR FILTER COVER COMP.	1
85	3001009311	CYLINDER COVER ASS'Y	1
86	3001033305	LOCK KNOB	1
87	4504001101	ROPE GUIDE	1
88	4009005104	SWITCH	1
89	4005002309	INLET PIPE ASS'Y	1
90	5010805101	SCREW	4
91	4005009103	CLIP	1
92	3001032302	AIR FILTER LOCK NUT	1
93	4009011103	BRACKET	1

CS4210 CHAINSAW

No.	Part No.	Description	Required Quantity
94	4005019105	CARBURETOR BRACKET	1
95	4005004101	INLET PIPE GUIDE	1
96	4017001205	CARBURETOR	1
97	4007004143	OIL PUMP PIPE(I)(EPA)	1
98	4005029101	ANCHOR	1
99	4005028101	CONNECTING ROD	1
100	5010705501	SCREW	2
101	5010404121	SCREW	2
102	3001035307	MANIFOLD COMP.	1
103	4005026301	GULP VALVE	1
104	4005001217	PAPER AIR FILTER COMP.	1
105	5010604101	SCREW	10
106	4002005101	LEFT CYLINDER COVER	1
107	4019008101	COVER GASKET	2
108	4002001115	CYLINDER	1
109	4002006101	RIGHT CYLINDER COVER	1
110	4007006102	TUBE JOINTS	1
111	4004002112	PISTON RING	1
112	4004001312	PISTON	1
113	4004004105	CIRCLIP	2
114	4004003108	PISTON PIN	1
115	5080809121	NEEDLE BEARING	1
116	5090212321	OIL SEAL	2
117	5080112321	BALL BEARING 6201	2
118	4003001209	CRANKSHAFT COMP.	1
119	4002003105	CRANKCASE SET	1
120	5010406162	SCREW	3
121	5010548163	SCREW	6
122	4007007103	FUEL PIPE COLLAR	2
123	4007004153	FUEL PIPE EPA	1
124	4007005103	CIRCLIP	2
125	4007001201	FUEL FILTER	1

CS4210 CHAINSAW

No.	Part No.	Description	Required Quantity
126	4007004144	FUEL RETURN PIPE(EPA)	1
127	4007002201	FUEL BREATHER ASS'Y	1
128	4007011101	BREATHER COVER	1
129	4007004112	BREATHER PIPE	1
130	3001004317	REAR HANDLE	1
131	3001029302	FUEL TANK LINK	1
132	4007010102	FUEL TANK CAP WASHER	1
133	3001027109	FUEL TANK CAP	1
134	4008003203	THROTTLE WIRE COMP.	1
135	3001021106	TRIGGER INTERLOCK ARM	1
136	3001020106	THROTTLE TRIGGER	1
137	4008002107	THROTTLE SPRING	1
138	3001008112	REAR HANDLE COVER	1
139	3001019102	FRONT HANDLE	1
140	3002002502	OIL TANK CAP COMP.	1
141	3002000355	EASY STARTER COVER ASS'Y	1
142	3002001002	CLUTCH ASS'Y	1
143	3002000218	CLUTCH COVER ASS'Y	1
144	3002002205	CHOKE ROD ASS'Y	1
145	3002000907	ENGINE COVER ASS'Y	1
146	3002000607	CYLINDER & PISTON ASS'Y	1
147	3002002710	PISTON ASS'Y	1
148	3002000808	REAR HANDLE COMP.	1
149	3002002402	FUEL TANK CAP COMP.	1
150	5050151615	WASHER	1
151	4012010104	PAWL WHEEL	1
152	4012002104	RECOIL SPRING	1
153	4000001306	WRENCH	1
154	4013001112	CYLINDER DAMPING SPRING	1
155	4000015105	CHOKE PLUG	1
156	4007007109	FUEL PIPE COLLAR	2

CS4210 CHAINSAW

No.	Part No.	Description	Required Quantity
157	4005012102	UP SEAL STRIP	1
158	4005012103	DOWN SEAL STRIP	1
159	3002003103	THE BRAKE BAND ASS'Y	1
160	3002003303	THE CLUTCH DRUM ASS'Y	1
161	3002003302	FUEL BREATHER ASS'Y	1
162	7003006001	NOISE LABEL	1
163	7102020001	STARTER COVER LABEL	1
164	7003010001	INSTRCUTION LABEL	1
165	7003033003	EPA LABEL	1
166	7003003020	WARNING LABEL	1
167	GAF20S056DL	SAW CHAIN	1
168	GAFAA1620EL	GUIDE BAR	1
169	4000006105	16"GUIDE BAR COVER	1