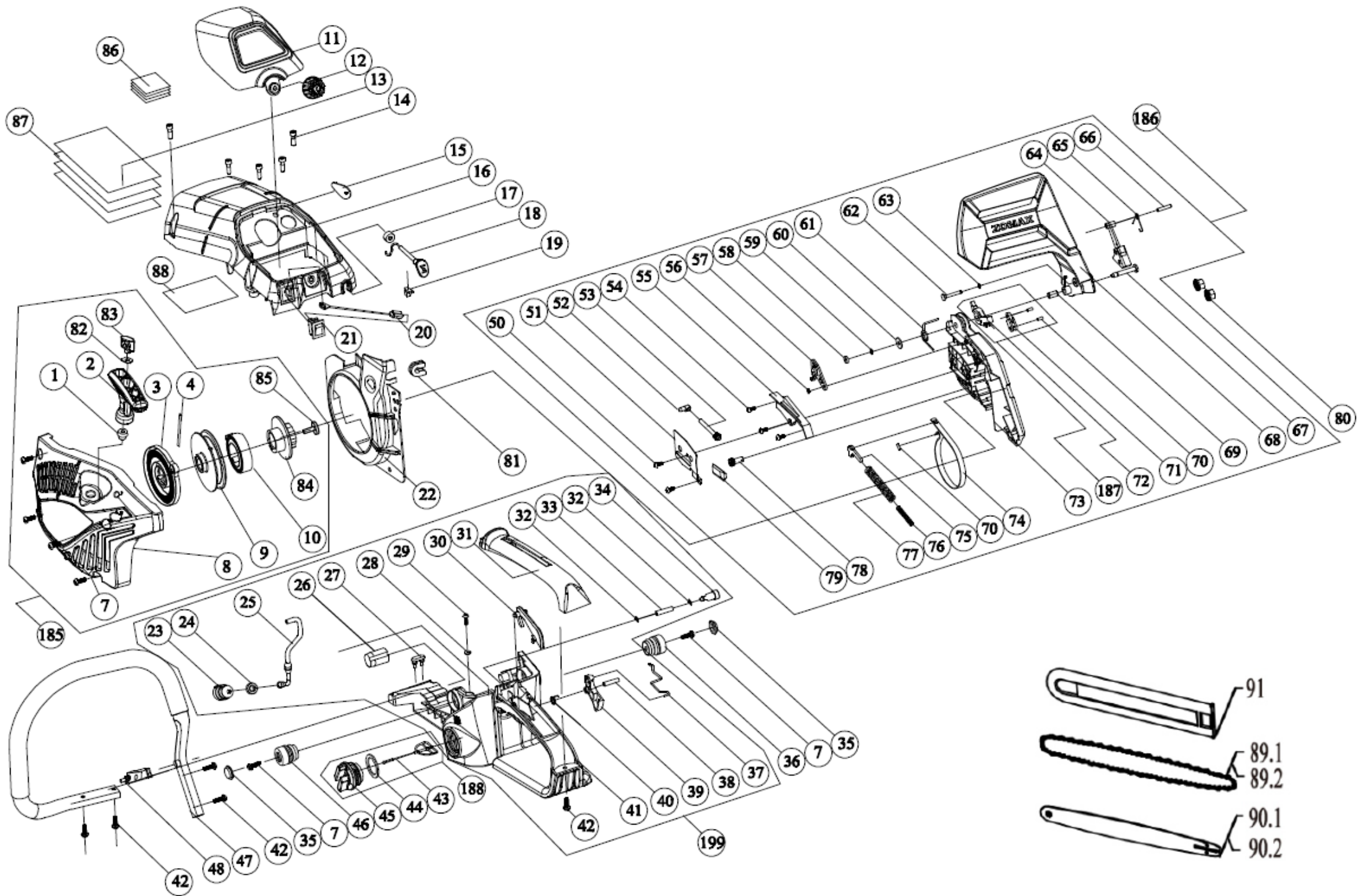


BUSH RANGER[®]

P O W E R E Q U I P M E N T

bushrangerpe.com.au

Illustrated Parts List - BRUZCS5210 & BRUZCS5610



CS5210 & CS5610 CHAINSAW

No.	Part No.	Description	Required Quantity
1	4504001101	ROPE GUIDE	1
2	3001024107	STARTER KNOB	1
3	4012001201	SPRING PLATE	1
4	4012003102	3*900 NYLON ROPE	1
7	5010405141	M5×14 SCREW	6
8	3001013372	EASY STARTER COVER ASS'Y	1
9	4012015113	EASY STARTER REEL	1
10	4012002107	RECOIL SPRING	1
11	3001010130	AIR FILTER COVER COMP	1
12	3001033305	AIR FILTER COVER KNOB	1
13	4018004109	HEAT SHIELD	1
14	5010605182	M5×18 SCREW	5
15	3001038101	HOT WIND COVER	1
16	3001009313	CYLINDER TOP COVER	1
17	4008004101	CHOKE ROD GUIDE	1
18	3001034312	CHOKE KNOB	1
19	4013002113	CHOKE ROD DAMPER	1
20	4009003110	FLAMEOUT CORD	1
21	4009005104	STOP SWITCH	1
22	3001014112	FAN COVER	1
23	4007001201	FUEL FILTER ASS'Y	1
24	4007007106	FUEL PIPE BUSHING	1
25	4007004108	FUEL PIPE	1
26	3001039102	DAMPER PLUG	1
27	4013002111	DAMPER	1
28	4019007101	FUEL BREATHER GASKET	1
29	5010339141	ST3.9×14 SCREW	1
30	3001021109	THROTTLE INTERLOCK ARM	1
31	3001008113	REAR HANDLE COVER	1
32	4007005103	6 CIRCLIP	3

CS5210 & CS5610 CHAINSAW

No.	Part No.	Description	Required Quantity
33	4007004113	BREATHER PIPE	1
34	4007002201	BREATHER ASS'Y	1
35	3001064105	DAMPER CAP	5
36	4013002112	DAMPER	1
37	4008003102	THROTTLE ROD	1
38	5040205241	5×24 SPRING PIN	1
39	3001020111	THROTTLE TRIGGER	1
40	4008002103	THROTTLE TRIGGER SPRING	1
41	3001004332	REAR HANDLE ASS'Y	1
42	5010548162	ST4.8×16 SCREW	9
43	3001029302	CAP LINK	1
44	4007010102	FUEL TANK CAP WASHER	1
45	3001027109	FUEL TANK CAP	1
46	4013002110	DAMPER	4
47	4008001103	FRONT HANDLE COMP	1
48	4013002133	DAMPER	1
49	5010605301	M5×30 SCREW	6
50	5010242652	ST4.2×6.5 SCREW	2
51	4015013101	TENSION PLATE	1
52	4015004102	TENSIONER PIN	1
53	4015002102	TENSIONER PASSIVE BOLT	1
54	5010242092	ST4.2×9.5 SCREW	3
55	3001015102	BRAKE SPRING COVER	1
56	5070303011	3.5 SNAP RING	1
57	4011009102	STOPPER PLATE	1
58	4011008101	RUBBER WASHER	1
59	5070304001	4 SNAP RING	1
60	5050106181	6×18×1.5 PLATE WASHER	1
61	4011006101	BRAKE SPRING	1
62	4011005103	STOP PIN	1
62	4010003102	CLUTCH SPRING	1

CS5210 & CS5610 CHAINSAW

No.	Part No.	Description	Required Quantity
63	5070303001	3.0 SNAP RING	1
64	4011011101	HOOK	1
65	4011010101	TORSIONAL SPRING	1
66	5040204221	4×22 PIN	1
67	4011005101	GUIDE PIN	1
68	3001036111	FRONT HAND GUARD	1
69	4011014105	GUIDE PIN SLEEVE	1
70	5040103091	3×9 PIN	3
71	4011004107	SUB LEVER	1
72	4011004106	MAIN LEVER	1
73	3001011326	CLUTCH COVER	1
74	4011003107	BRAKE BAND	1
75	4011004108	BRAKE ARM	1
76	4011001102	BRAKE SPRING (MAIN)	1
77	4011002101	BRAKE SPRING (SUB)	1
78	4015001102	CHAIN TENSION ADJUSTER	1
79	3001046101	CHAIN GUIDE	2
80	5020508001	NUT M8	2
81	4009010101	U BUSHING BRACKET	1
82	4019009101	GASKET	1
83	4018002139	STARTER KNOB RUBBER	1
84	4012010106	PAWL WHEEL	1
85	5011605142	SPECIAL SCREW	1
86	4018004108	HEAT SHIELD	4
87	4018004116	HEAT SHIELD	3
88	4018004117	HEAT SHIELD	1
89.1	GAF38F072DL	SAW CHAIN CS5210	1
90.1	GAFBB1838PL	GUIDE BAR CS5210	1
89.2	GAF48F064DL	SAW CHAIN CS5610	1
90.2	GAFBB1848PL	GUIDE BAR CS5610	1
91	4000006106	18" GUIDE BAR COVER	1

CS5210 & CS5610 CHAINSAW

No.	Part No.	Description	Required Quantity
101	5020105001	MUFFLER NUT M5	2
103	5010605121	M5×12 SCREW	4
104	4006001220	MUFFLER	1
105	4019003108	GASKET	1
106	5011605871	M5×87 MUFFLER BOLT	2
107	5010605301	M5×30 SCREW	4
108.1	4002001111	5610 CYLINDER 45.2mm	1
108.2	4002001119	5210 CYLINDER 44mm	1
109	4009004105	SPARK PLUG	1
110	4019002106	CYLINDER GASKET	1
111.1	4004002104	5610 PISTON RING 45.2mm	2
111.2	4004002117	5210 PISTON RING 44mm	2
112	4004004104	CIRCLIP	2
113	4004003105	PISTON PIN	1
114	4004005101	WASHER	2
115	5080911151	K11×15×12 NEEDLE BEARING	1
116.1	4004001206	5610 PISTON 45.2mm	1
116.2	4004001317	5210 PISTON 44mm	1
117	4003001205	CRANKSHAFT COMP	1
118	5060103101	WOODRUFF KEY 3.0×3.7×10	1
119	3001006101	CARBURETOR SPACER	1
120	4009007102	SPARK PLUG COVER	1
121	4009003111	FLAMEOUT CORD	1
122	4009002302	IGNITOR	1
123	3001029301	CAP LINK	1
124	4014009101	OIL TANK CAP GASKET	1
125	3001025108	OIL TANK CAP	1
126	5070235001	35 SNAP RING	1
127	5090215351	15×35×4.5 OIL SEAL (L)	1
128	4018008101	OIL SEAL PLATE	1

CS5210 & CS5610 CHAINSAW

No.	Part No.	Description	Required Quantity
129	5010604061	M4×6 SCREW	4
132	5021008011	NUT M8×1	1
133	4005010103	ANTI-DUST SCREEN	1
134	4013002134	STOPPER (L)	1
135	4001002108	LEFT CRANKCASE	1
136	4018002108	DUST SHIELD	1
138	5080115351	BALL BEARING 6202	2
139	5090215281	15×28×4.5 OIL SEAL (R)	1
140	4001005102	STOP PIN	2
141	4019001106	CRANKCASE GASKET	1
142	4001004108	RIGHT CRANKCASE	1
143	4013002135	STOPPER (R)	1
144	4007006301	TUBE JOINTS	1
145	4007005104	CLIP	2
146	4007004103	VACUUM PIPE	1
147	4014002202	OIL FILTER ASS'Y	1
148	4014004102	OIL PUMP PIPE (I)	1
149	4014005102	OIL PUMP PIPE (O)	1
150	4014016102	SEALED SPONGE	1
151	4014001202	OIL PUMP ASS'Y	1
152	5010604151	M4×15 SCREW	2
153	4014002301	OIL PUMP COVER	1
154	5010604101	M4×10 SCREW	3
155	4014006302	OIL PUMP WORM	1
156	5080812151	K12×15×15 NEEDLE BEARING	1
157.1	4010007110	SPROCKET 0.325-8	1
157.2	4010007102B	SPROCKET 3/8	1
158	4010004302	CLUTCH DRUM	1
159	4010005102	CLUTCH WASHER	1
160	4010001102	CLUTCH WEDGE	3
161	4010003102	CLUTCH SPRING	1
162	4010002102	WEDGE BRACKET	1

CS5210 & CS5610 CHAINSAW

No.	Part No.	Description	Required Quantity
163	4005014101	DAMPER	1
164	5010705501	M5×50 SCREW	2
165	3001035304	AIR INLET CURVING PIPE	1
166	4005005303	AIR CLEANER ASS'Y	1
167	4005017102	AIR CLEANER BRACKET	1
168	3001032302	AIR FILTER LOCK NUT	1
169	4017001305	CARBURETOR	1
170	4019006105	INSULATION GASKET	1
171	5011604202	M4×20 SCREW	4
172	3001022301	CARBURETOR BRACKET	1
173	4005024102	GASKET	1
174	4005025201	NON-RETURN VALVE	1
175	3001064103	SPRING SEAT	1
176	4013001103	SPRING	1
177	3001064104	CHAIN CATCHER	1
178	5011605141	M5×14 SCREW	1
179	4000011103	SPIKED BUMPER	1
180	4014010101	BREATHER VALVE	1
181	4014016101	SPONGE	1
182	4014015101	CIRCLIP	1
183	5030308261	M8×26 STUD	2
184	4014008101	OIL GUIDE PLATE	1
185.1	3002000352A	EASY STARTER ASS'Y CS5210	1
185.2	3002000352B	EASY STARTER ASS'Y CS5610	1
186.1	3002000216A	CLUTCH COVER ASS'Y CS5210	1
186.2	3002000216B	CLUTCH COVER ASS'Y CS5610	1
187	4011004201	LEVER ASS'Y	1
188	3002002402	FUEL TANK CAP ASS'Y	1
189	3002002502	OIL TANK CAP ASS'Y	1
190	3002001002	CLUTCH COMP	1

CS5210 & CS5610 CHAINSAW

No.	Part No.	Description	Required Quantity
191	4009002314	IGNITION ASS'Y	1
192	5010705201	M5×20 SCREW	2
193	4009001206	FLYWHEEL ASS'Y	1
194	5011606001	SPRING	2
195	4012005106	PAWL	2
196	4012006106	SHOULDER SCREW	2
197	4005024107	GASKET	1
198	4019003102	GASKET	1
199	3002000813	REAR HANDLE COMP	1
200.1	3002003304A	THE CLUTCH DRUM ASS'Y(0.325)	1
200.2	3002003304B	THE CLUTCH DRUM ASS'Y(3/8)	1
201.1	3002003305	PISTON KIT ASS'Y(CS5610)	1
201.2	3002003306	PISTON KIT ASS'Y(CS5210)	1
202.1	3002000611	CYLINDER AND PISTON ASS'Y (CS5610)	1
202.2	3002000612	CYLINDER AND PISTON ASS'Y (CS5210)	1
203	7003006001	NOISE LABEL	1
204	7102022001	STARTER COVER LABEL (CS5610)	1
205	7102022002	CLUTCH COVER LABEL (CS5610)	1
206	7003004003	SWITCH LABEL	1
207	7102022003	EPA LABEL (CS5610)	1
208	7003003019	WARNING LABEL	1
209	7102021001	STARTER COVER LABEL (CS5210)	1
210	7102021002	CLUTCH COVER LABEL (CS5210)	1
211	7102021003	EPA LABEL (CS5210)	1